

# SWITCHES

Among the earliest products manufactured by Mason are toggle and rotary switches. Originally used to switch very high current circuits, these extremely rugged and dependable switches are now specified where failure free operation is mandatory. They are used in aircraft trim, safe/arm, weapon management, and manned space vehicle systems.

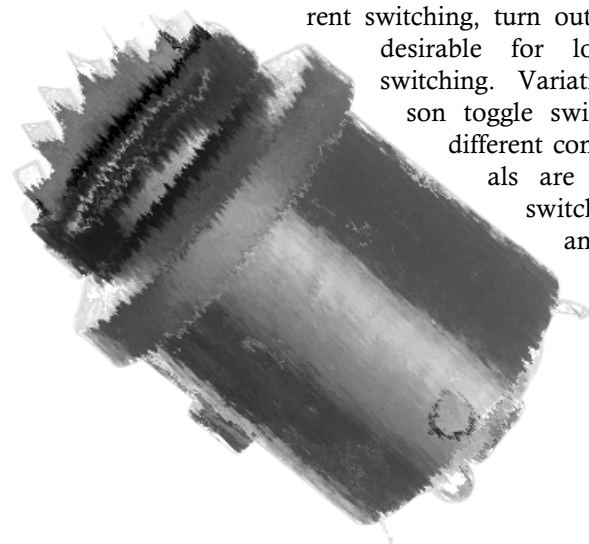
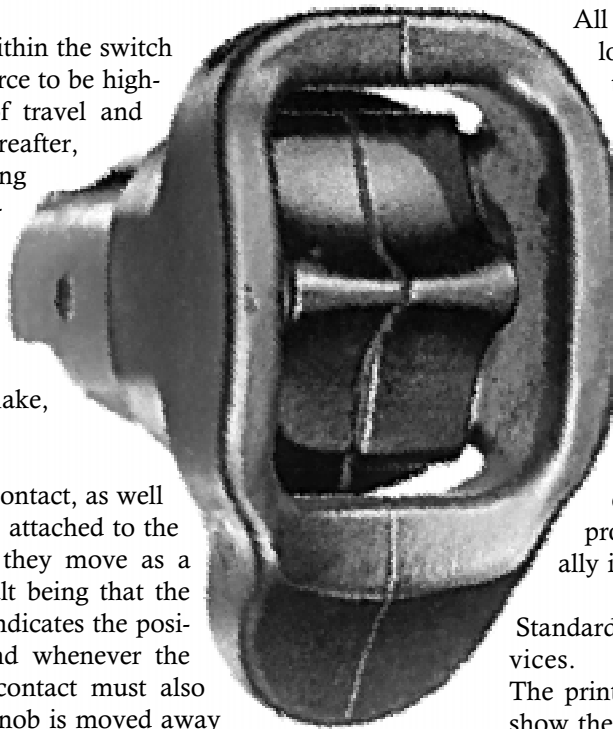
## Toggle Switches.

Mason toggle switches incorporate snap-feel, quick-make, quick-break, contact wipe and true positive action.

Spring mechanisms within the switch cause the operating force to be highest near the center of travel and drop off rapidly thereafter, producing a satisfying snap feel when operated. This snap feel, combined with the natural motion of the thumb, or finger, operating the switch, results in a quick-make, quick-break action.

Having the electrical contact, as well as the operating knob, attached to the actuator assures that they move as a single unit. The result being that the position of the knob indicates the position of the switch and whenever the knob is moved, the contact must also move. So, once the knob is moved away from a closed position, that circuit will definitely be opened, a true positive action. This is not the case, for instance, with limit switches, where the actuator and contacts are independent and the circuit could remain closed even though the actuator operates.

After operation, the mated contacts travel on different paths so that they move across each other, rather than together, resulting in a brisk wiping action that cleans the contacting surfaces.



These features, so necessary for high current switching, turn out to also be desirable for low current switching. Variations of Mason toggle switches using different contact materials are capable of switching low and very low currents.

## Rotary Switches.

Mason rotary switches feature enclosed construction, double-make, double-break circuitry and stored energy action.

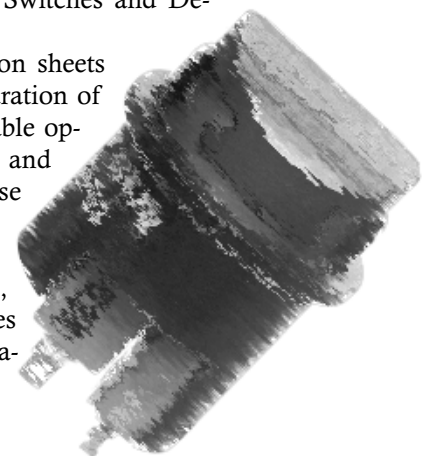
All contact surfaces and switching mechanisms are located inside the switch where they are protected from outside elements. This enclosure also makes the switch explosion proof.

A circuit is completed by a shorting member that bridges a separate input contact and output contact at each switch position. This allows circuit versatility and forces the current to make and break at two points simultaneously, dividing the load, heat and wear.

As rotation to the next position is begun, a spring in the advance mechanism is compressed, storing energy that is released all at once as rotation continues. This rapid advance produces a quick-break, quick-make that is virtually independent of the speed of the actuator.

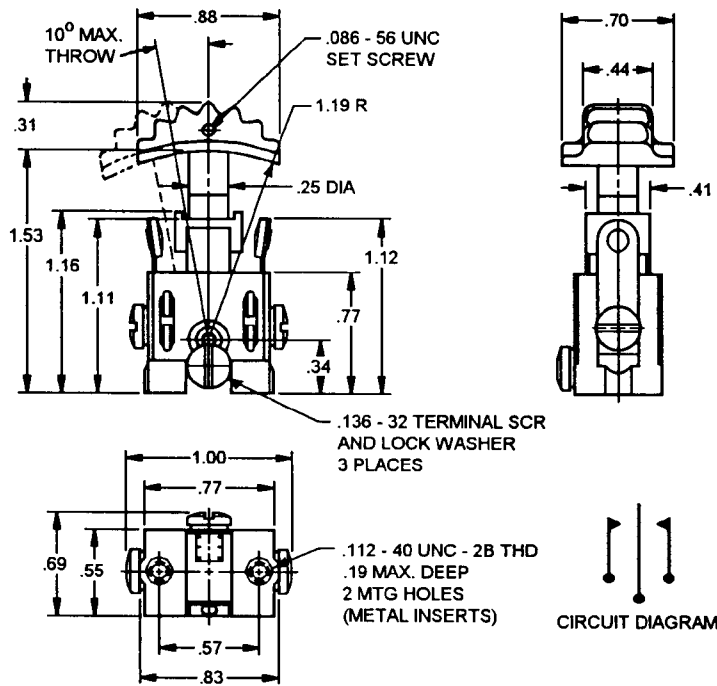
## Standard and Special Switches and Devices.

The printed specification sheets show the basic configuration of a switch and list available options. Adaptations and variations of these switches, or specialty switches and devices used in Mason grips, are shown on the pages following the specification sheets.



**300 SERIES**  
**Extra Heavy Duty**

**Toggle Switch**  
**Single Pole, Double Throw,**  
**Center-Off, Momentary**



**Specifications:**

Action: Single pole, double throw, center-off, momentary contact, positive action toggle with snap action feel.

Actuation Force: 3 lbs. maximum.

Number of Positions: Three

Rating:

Resistive: 30 amperes @ 28 VDC/120 VAC for 10,000 cycles.

Inductive: 20 amperes @ 28 VDC/120 VAC for 10,000 cycles.

Overload: 45 amperes @ 28 VDC/120 VAC for 50 cycles.

Contacts: Silver-cadmium oxide.

Temperature Range: Operates from -67°F to +158°F.

Construction: Open, two hole, base mount.

Weight: .75 oz.

**Test Data:**

Mechanical Endurance: 75,000 cycles.

Shock: 50g.

Vibration: 5 - 500 cycles per second, 15 g, 0.036 DA.

Environmental: Meets temperature, altitude, temperature shock, salt fog, sand and dust, and humidity requirements of MIL-E-5272.

**Description:** The Mason 300 Series Toggle Switch is an extra heavy duty device capable of switching large electrical loads directly, eliminating the need for intermediate relays. A positive action switch, it has a vigorous wiping action for self-cleaning of the non-weldable, silver-cadmium oxide contacts.

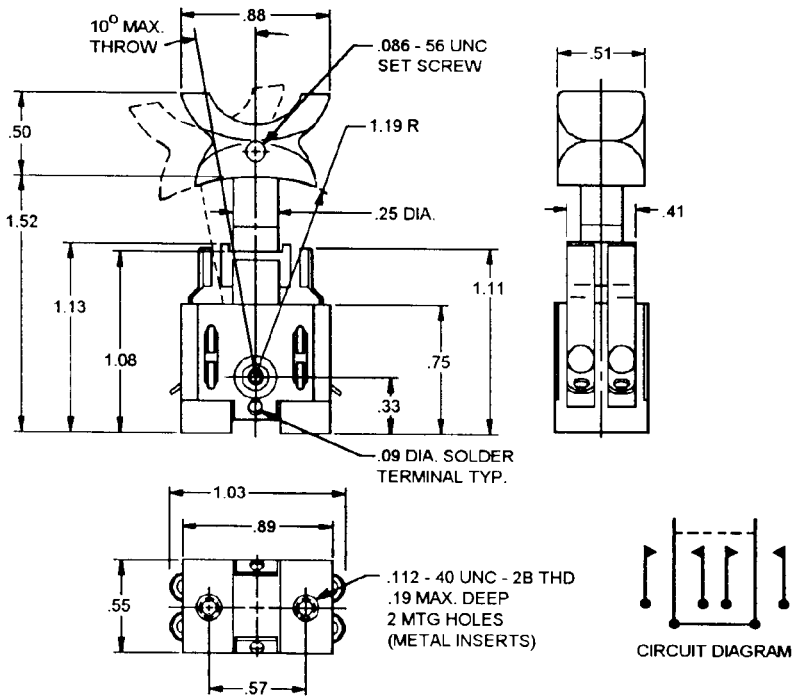
**Options:**

Knob Configuration: Available in various shapes.  
 Available in various colors.

Construction: Available with solder terminals.  
 Available with 2-position circuitry.  
 Available with maintaining action.

**303 SERIES**  
**Heavy Duty**  
**Solder Terminal**

**Toggle Switch**  
**Split Pole, Double Throw,**  
**Center-Off, Momentary**



**Specifications:**

Action: Single pole, double throw, center-off, split-contact, momentary contact, positive action toggle with snap feel.

Actuation Force: 3 lbs, maximum.

Number of Positions: Three.

Rating:

Resistive: 15 amperes @ 28 VDC/120 VAC for 10,000 cycles.

Inductive: 10 amperes @ 28 VDC/120 VAC for 10,000 cycles.

Contacts: Silver- cadmium oxide.

Temperature Range: Operates from -67°F to +158°F.

Construction: Open, two hole, base mount.

Weight: 1.5 oz.

**Test Data:**

Mechanical Endurance: 50,000 cycles.

Shock: 50g.

Vibration: 10 - 55 cycles per second, 0.06 DA.

Environmental: Meets temperature, altitude, temperature shock, salt fog, sand and dust, and humidity requirements of MIL-E-5272.

**Description:** The Mason 303 Series toggle switch is a heavy duty device capable of switching large electrical loads directly, eliminating the need for intermediate relays. A positive action switch, it has a vigorous wiping action for self-cleaning of the non-weldable, silver-cadmium oxide contacts. Terminals are gold plated.

**Options:**

Knob Configuration: Available in various shapes.

Available in various colors.

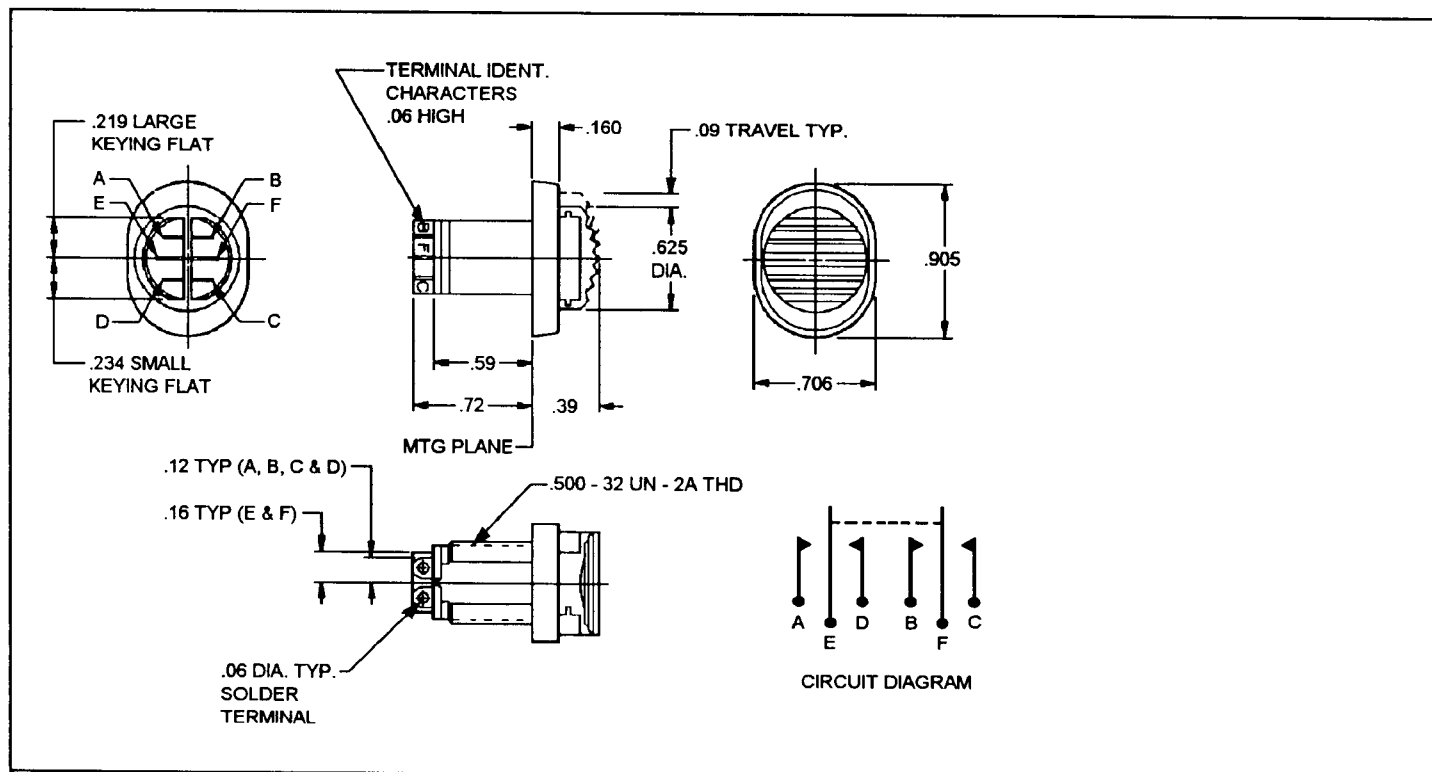
Construction: May be mounted in cavity using surfaces defined by dimensions .55 x .89 x .75.

Available with 2-position circuitry.

Available with maintaining action.

**305 SERIES**  
**Light Duty**  
**External Thread Mount**

**Slide Switch**  
**Double Pole, Double Throw,**  
**Center-Off**



**Specifications:**

Action: Double pole, double throw, center-off, momentary contact, positive action slide.

Actuation Force: 34 ozs. maximum.

Number of Positions: Three (center-off).

**Rating:**

Resistive: 5 amperes @ 28 VDC.

Inductive: 3 amperes @ 28 VDC.

Contacts: Gold-plated terminals.

Temperature Range: Operates from -67°F to +158°F.

Construction: Enclosed, single hole cavity mount.

Weight: .5 oz. max.

**Test Data:**

Mechanical Endurance: 50,000 cycles.

Shock: 50g.

Vibration: 10 - 55 cycles per second, 0.06 DA.

Environmental: Meets temperature, altitude, temperature shock, salt fog, sand and dust, and humidity requirements of MIL-E-5272.

**Description:** The Mason 305 Series slide switch is a miniature, light duty device incorporating positive action and wiping action for self cleaning of the contacts. Terminals are gold plated. With optional adapter ring, it will fit in the same cavity as the MS25089, Type A, pushbutton switch.

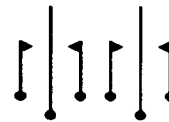
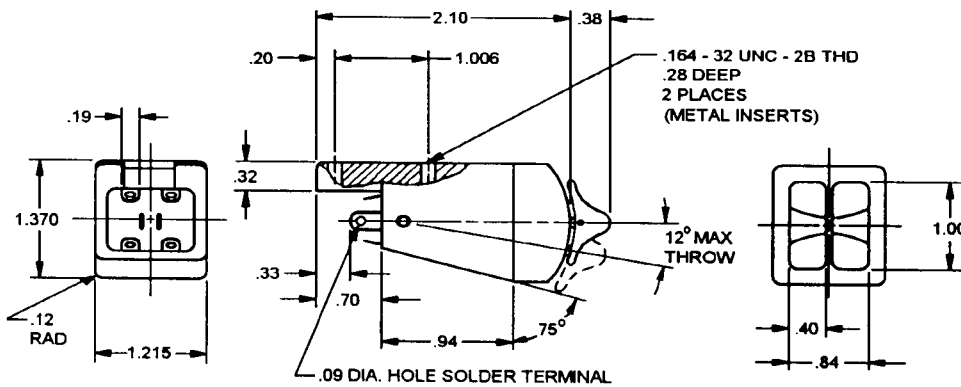
**Options:**

Knob Configuration: Available in various shapes.  
 Available in various colors.

Construction: Available with momentary or maintaining action in any combination.  
 Available with center on (becomes single pole).  
 Available with .500 - 32 nut and lock washer for thin panel mounting.  
 Available with adapter ring for pushbutton cavity mounting.  
 Available with wired leads.  
 Available with encapsulated wired leads.  
 Available with low current contacts.

**306 SERIES**  
**Heavy Duty**  
**Square Body**

**Toggle Switch**  
**Double Pole, Double Throw,**  
**Center-Off, Dual Actuation,**  
**Momentary**



CIRCUIT DIAGRAM

**Specifications:**

Action: Double pole, double throw, center-off, momentary contact, positive action toggle. Poles may be operated independently.

Actuation Force: 2 lbs. maximum for each pole.

Number of Positions: Three (center-off).

Rating:

Inductive: 5 amperes @ 28 VDC/120 VAC for 200,000 cycles.

Overload:

Inductive: 10 amperes @ 28 VDC/120 VAC for 400 cycles.

Contacts: Silver-cadmium oxide.

Temperature Range: Operates from -67°F to +158°F.

Construction: Enclosed, cavity mount.

Weight: 5 oz.

**Test Data:**

Mechanical Endurance: 400,000 cycles.

Shock: 50g.

Vibration: 10 - 55 cycles per second, 0.06 DA.

Environmental: Meets temperature, altitude, temperature shock, salt fog, sand and dust, and humidity requirements of MIL-E-5272.

**Description:** The Mason 306 Series toggle switch is a heavy duty device designed specifically for ultra-high reliability applications, such as aircraft trim systems, where a single failure could result in loss of life or property. Wiring the two poles in series increases the reliability, since only one pole would have to operate to open the circuit.

Used by all the major aircraft manufacturers for trim control for their jet aircraft.

A separate operating knob is provided for each pole (normally operated together). A positive action switch, it has wiping action for self-cleaning of the non-weldable, silver-cadmium oxide contacts.

**Options:**

Knob Configuration: Available in various shapes.  
 Available in various colors.

Construction: Available with various location, quantity, and type of mounting insert(s).

Available with flange mounting.

Available with wired leads.

Available with encapsulated wired leads.

Available with screw terminals.

Available with screw terminals and wired leads.

Available with protective guard around operating knob.

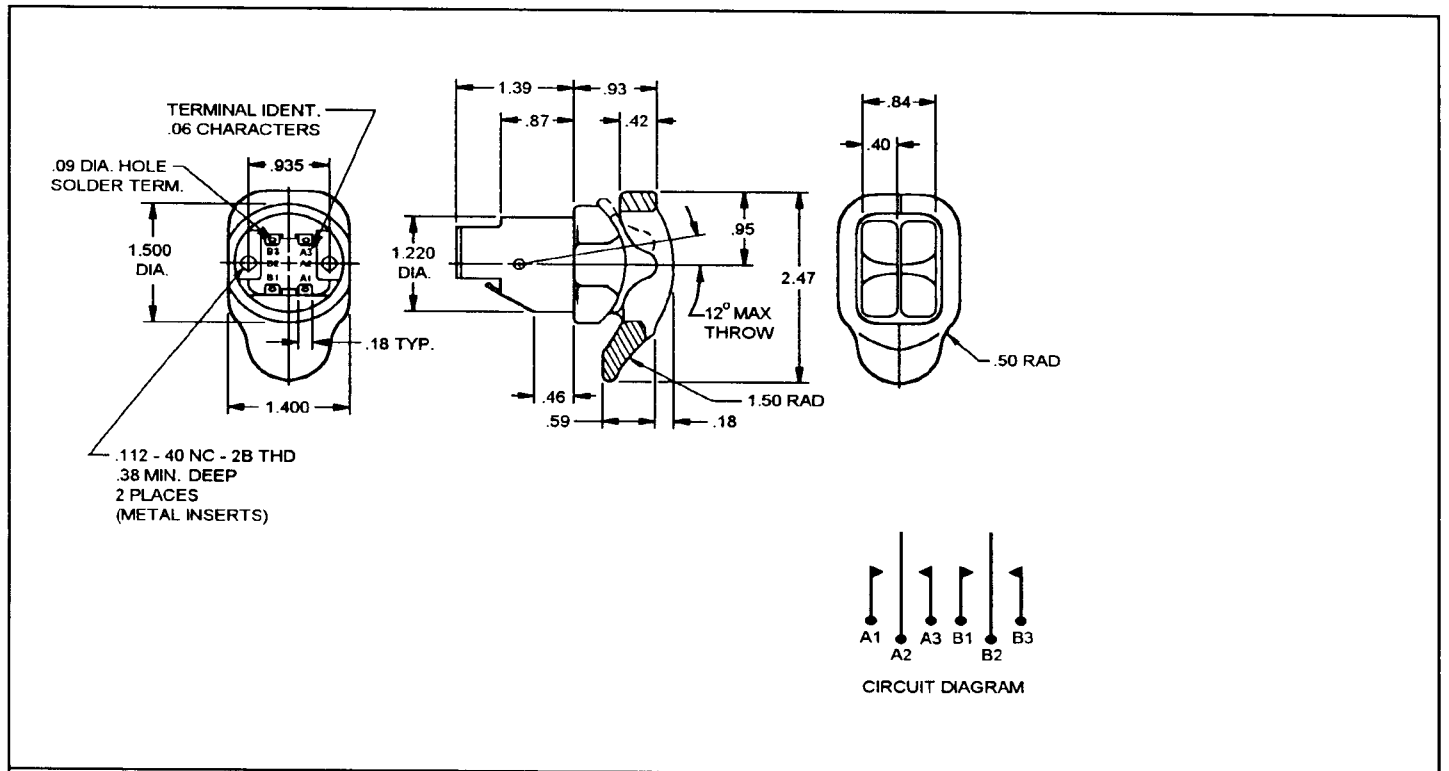
Available with single knob.

Available with inscribed faceplate.

Available with low current contacts.

**306 SERIES  
Heavy Duty  
Round Body**

**Toggle Switch  
Double Pole, Double Throw,  
Center-Off, Dual Actuation,  
Momentary**



**Specifications:**

Action: Double pole, double throw, center-off, momentary contact, positive action toggle. Poles may be operated independently.

Actuation Force: 2 lbs. maximum each pole

Number of Positions: Three (center-off).

**Rating:**

Inductive: 5 amperes @ 28 VDC/120 VAC for 200,000 cycles.

**Overload:**

Inductive: 10 amperes @ 28 VDC/120 VAC for 400 cycles.

Contacts: Silver-cadmium oxide.

Temperature Range: Operates from -67°F to +158°F.

Construction: Enclosed, cavity mount.

Weight: 5 oz.

**Test Data:**

Mechanical Endurance: 400,000 cycles.

Shock: 50g.

Vibration: 10 - 55 cycles per second, 0.06 DA.

Environmental: Meets temperature, altitude, temperature shock, salt fog, sand and dust, and humidity requirements of MIL-E-5272.

**Description:**

The Mason 306 Series toggle switch is a heavy duty device designed specifically for ultra-high reliability applications, such as aircraft trim systems, where a single failure could result in loss of life or property. Wiring the two poles in series increases the reliability, since only one pole would have to operate to open the circuit.

Used by all the major aircraft manufacturers for trim control for their jet aircraft.

A separate operating knob is provided for each pole (normally operated together). A positive action switch, it has wiping action for self-cleaning of the non-weldable, silver-cadmium oxide contacts. Terminals are gold plated.

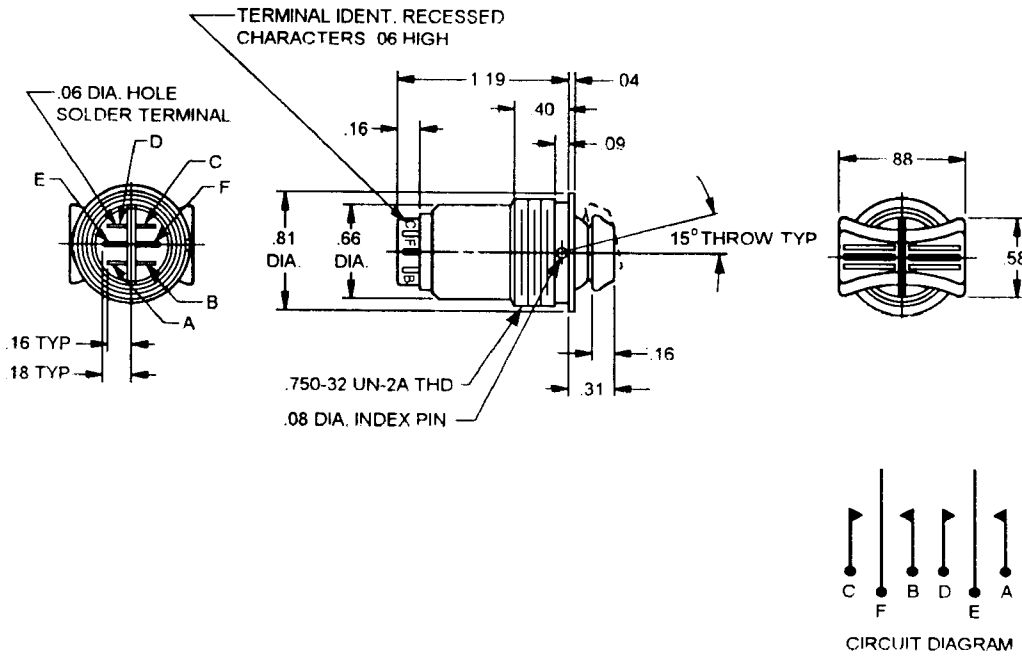
**Options:**

Knob Configuration: Available in various shapes.  
Available in various colors.

Construction: Available with wired leads.  
Available with encapsulated wired leads.  
Available without protective guard around knobs.  
Available with single knob.  
Available with inscribed faceplate or guard.  
Available with low current contacts.

**309 SERIES**  
**Light Duty**  
**External Thread Mount**

**Rocker Switch**  
**Double Pole, Double Throw,**  
**Center-Off, Dual Actuation,**  
**Momentary**



**Specifications:**

Action: Double pole, double throw, center-off, momentary contact, positive action rocker. Poles may be operated independently.

Actuation Force: 34 ozs., maximum each pole

Number of Positions: Three (center-off).

**Rating:**

Resistive: 5 amperes @ 28 VDC.

Inductive: 3 amperes @ 28 VDC.

Contacts: Gold plated terminals.

Temperature Range: Operates from -67°F to +158°F.

Construction: Enclosed, single hole panel mount.

Weight: 0.5 oz.

**Test Data:**

Mechanical Endurance: 200,000 cycles.

Shock: 50g.

Vibration: 10 - 55 cycles per second, 0.06 DA.

Environmental: Meets temperature, altitude, temperature shock, salt fog, sand and dust, and humidity requirements of MIL-E-5272.

**Description:** The Mason 309 Series rocker switch is a miniature, positive action device designed for high reliability applications.

Wiring the two poles in series increases the reliability, since only one pole would have to operate to open the circuit

A separate operating knob is provided for each pole (normally operated together). A positive action switch, it has wiping action for self-cleaning of the contacts. Terminals are gold plated.

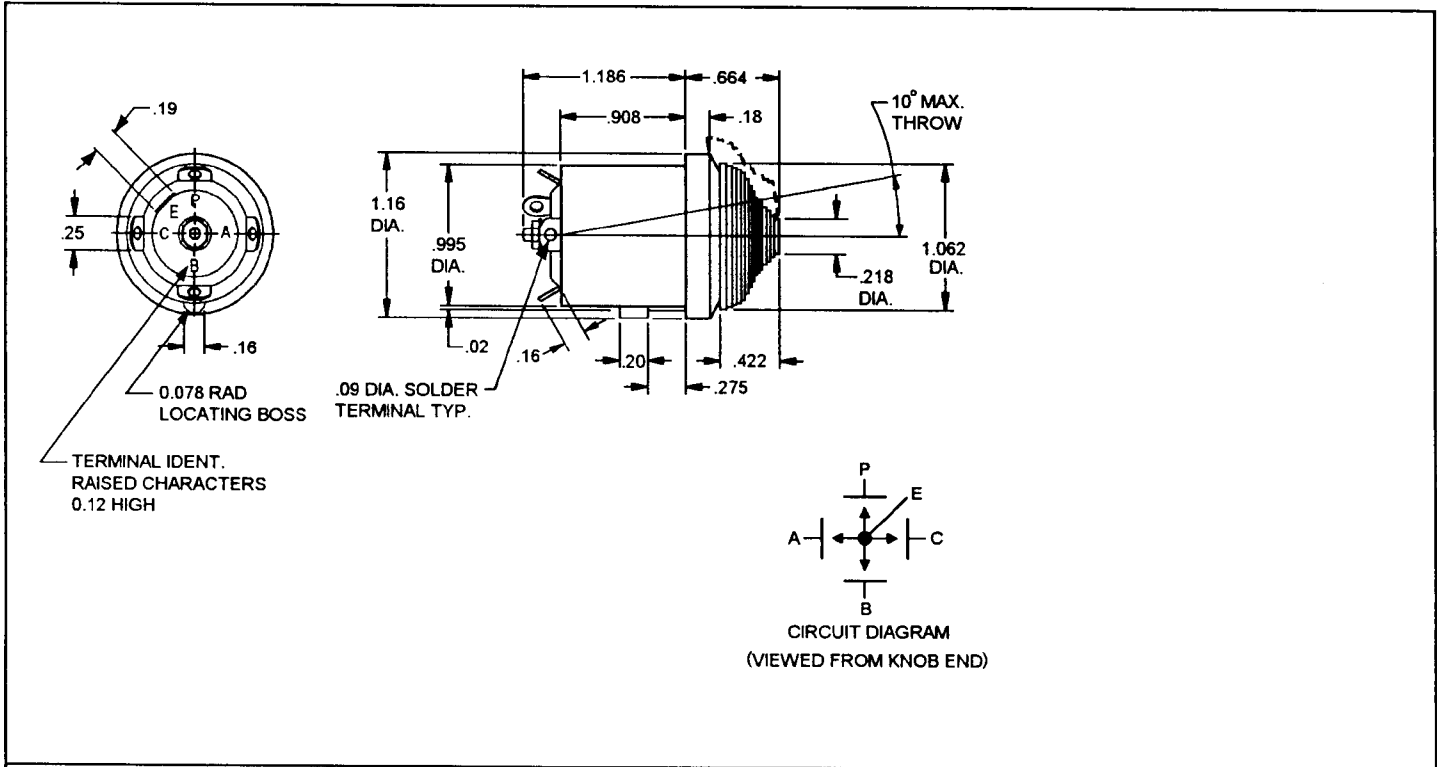
**Options:**

Knob Configuration: Available in various shapes  
 Available in various colors.  
 Available with recessed legend

Construction: Available with momentary or maintaining action in any combination.  
 Available with center on (becomes single pole).  
 Available with single knob.  
 Available with 0.750 - 32 nut and lock washer for thin panel mounting.  
 Available without threads for cavity mounting.  
 Available with wired leads.  
 Available with encapsulated wired leads.  
 Available with low current contacts

**400 SERIES**  
**Extra Heavy Duty**  
**Single Pole**

**Toggle Switch**  
**Single-Pole, 4-Throw**  
**Center-Off, Momentary**



**Specifications:**

Action: Single pole, four throw, center-off, momentary contact, positive action, toggle.

Actuation Force: 3 lbs., maximum.

Number of Positions: Five (center-off).

**Rating:**

Resistive: 20 amperes @ 28 VDC/120 VAC for 100,000 cycles.

Inductive: 20 amperes @ 28 VDC/120 VAC for 100,000 cycles.

**Overload:**

Inductive: 30 amperes @ 28 VDC/120 VAC for 400 cycles.

Contacts: Silver cadmium oxide.

Temperature Range: Operates from -67°F to +158°F.

Construction: Enclosed, cavity mount.

Weight: 1.5 oz.

**Test Data:**

Mechanical Endurance: 200,000 cycles.

Shock: 50g.

Vibration: 10 - 55 cycles per second, 0.06 DA.

Environmental: Meets temperature, altitude, temperature shock, salt fog, sand and dust, and humidity requirements of MIL-E-5272.

**Description:** The Mason 400 Series 4-throw switch is an extra heavy duty device capable of switching large electrical loads directly, eliminating the need for intermediate relays. It meets the electrical and size requirements of MIL-S-9419.

A positive action switch, it has a vigorous wiping action for self-cleaning of the non-weldable, silver -cadmium oxide contacts.

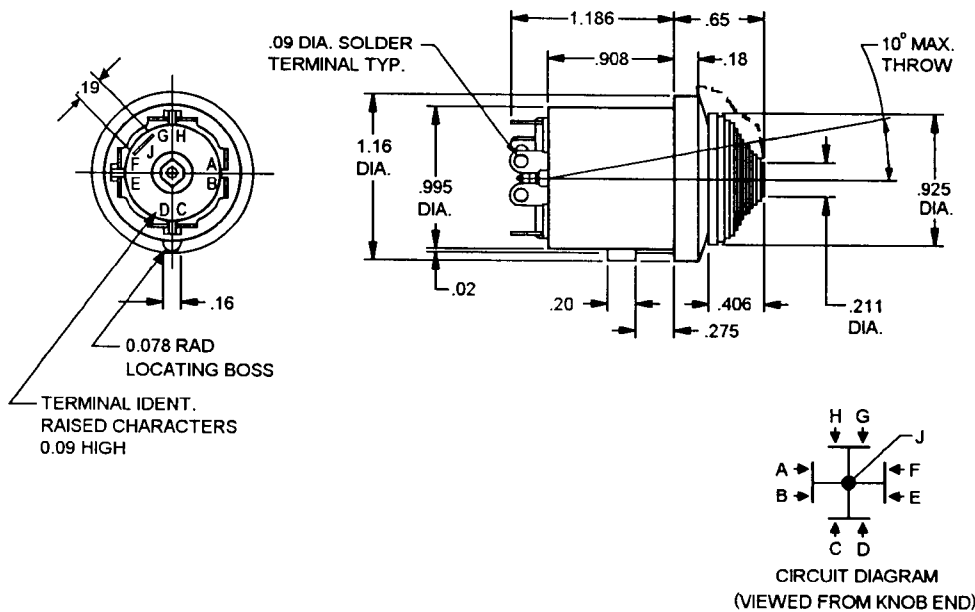
**Options:**

Knob Configuration: Available in various shapes.  
 Available in various colors.  
 Available in various sizes.

Construction: Available with three hole panel mounting (in metal housing).  
 Available with internal seal (silicone rubber boot).  
 Available in 2 or 3 throw.  
 Available with lower operating force.  
 Available with maintaining contact in any or all directions.  
 Available with inscribed faceplate.  
 Available with low current contacts.

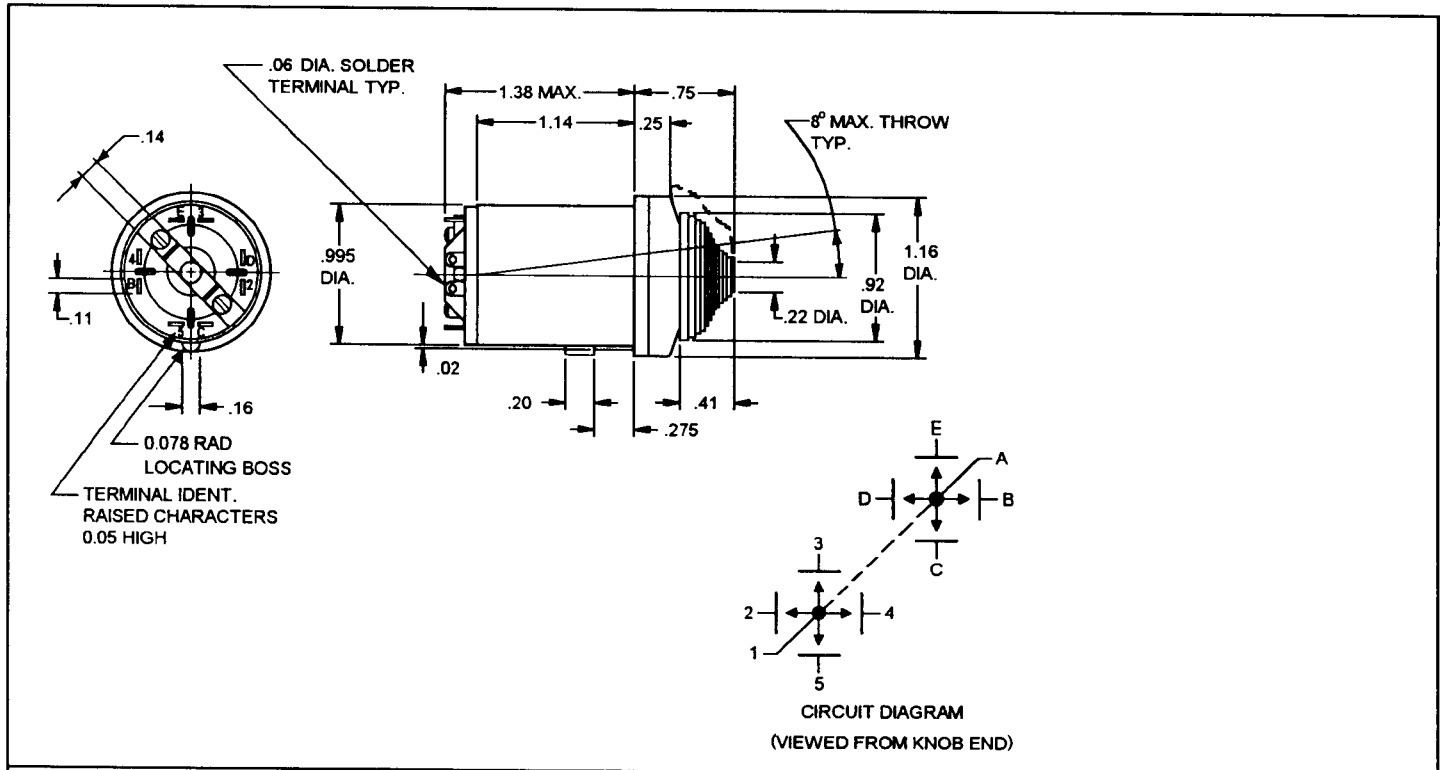
**400 SERIES  
Heavy Duty  
Split-Pole**

**Toggle Switch  
Split-Pole, 4-Throw  
Center-Off, Momentary**



**400 SERIES  
Heavy Duty  
Two-Pole**

**Toggle Switch  
Two-Pole, 4-Throw  
Center-Off, Momentary**



**Specifications:**

Action: Two pole, four throw, center-off, momentary contact, positive action toggle.

Actuation Force: 3 lbs., maximum.

Number of Positions: Five (center-off).

**Rating:**

Inductive: 5 amperes @ 28 VDC/120 VAC for 100,000 cycles.

**Overload:**

Inductive: 7 amperes @ 28 VDC/120 VAC for 400 cycles.

Contacts: Silver-cadmium oxide.

Temperature Range: Operates from -67°F to +158°F.

Construction: Enclosed, cavity mount.

Weight: 1.8 oz.

**Test Data:**

Mechanical Endurance: 200,000 cycles.

Shock: 50g.

Vibration: 10 - 55 cycles per second, 0.06 DA.

Environmental: Meets temperature, altitude, temperature shock, salt fog, sand and dust, and humidity requirements of MIL-E-5272.

**Description:**

The Mason 400 Series switch is a variation of the SP4T, that has two separate commons that connect to two separate contacts in each of the four switch positions.

A positive action switch, it has a vigorous wiping action for self-cleaning of the non-weldable, silver-cadmium oxide contacts.

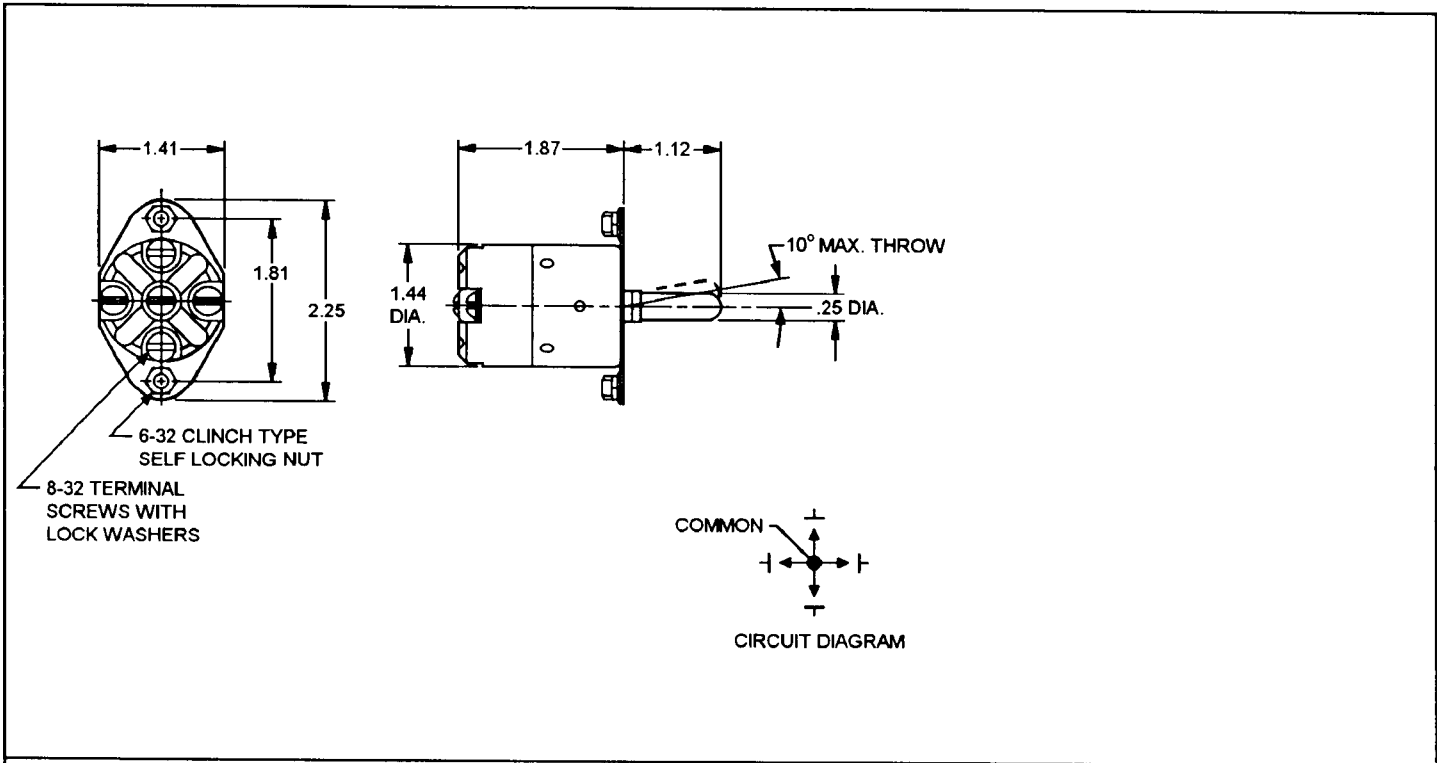
**Options:**

Knob Configuration: Available in various shapes.  
Available in various colors.  
Available in various sizes.

Construction: Available with three hole panel mounting (in metal housing).  
Available with internal seal (silicone rubber boot).  
Available in 2 or 3 throw.  
Available with lower operating force.  
Available with inscribed faceplate.  
Available with low current contacts.

**304 SERIES**  
**Extra Heavy Duty**  
**Panel Mount**  
**Screw Terminals**

**Toggle Switch**  
**Single-Pole, 4-Throw**  
**Center-Off, Momentary**



**Specifications:**

Action: Single pole, four throw, center-off, momentary contact, positive action, toggle.

Actuation Force: 3 lbs., maximum.

Number of Positions: Five (center-off).

**Rating:**

Resistive: 20 amperes @ 28 VDC/120 VAC for 100,000 cycles.

Inductive: 20 amperes @ 28 VDC/120 VAC for 100,000 cycles.

**Overload:**

Inductive: 30 amperes @ 28 VDC/120 VAC for 400 cycles.

Contacts: Silver cadmium oxide.

Temperature Range: Operates from -67°F to +158°F.

Construction: Enclosed, sealed (silicone rubber boot), three hole panel mount, screw terminals.

Weight: 4.0 oz.

**Test Data:**

Mechanical Endurance: 200,000 cycles.

Shock: 50g.

Vibration: 10 - 55 cycles per second, 0.06 DA.

Environmental: Meets temperature, altitude, temperature shock, salt fog, sand and dust, and humidity requirements of MIL-E-5272.

**Description:** The Mason 304 Series 4-throw switch is an extra heavy duty device capable of switching large electrical loads directly, eliminating the need for intermediate relays. It meets the electrical requirements of MIL-S-9419.

A positive action switch, it has a vigorous wiping action for self-cleaning of the non-weldable, silver -cadmium oxide contacts.

**Options:**

Knob Configuration: Available in various shapes.

Available in various colors.

Available in various sizes.

Construction: Available with other mounting plates and dimensions.

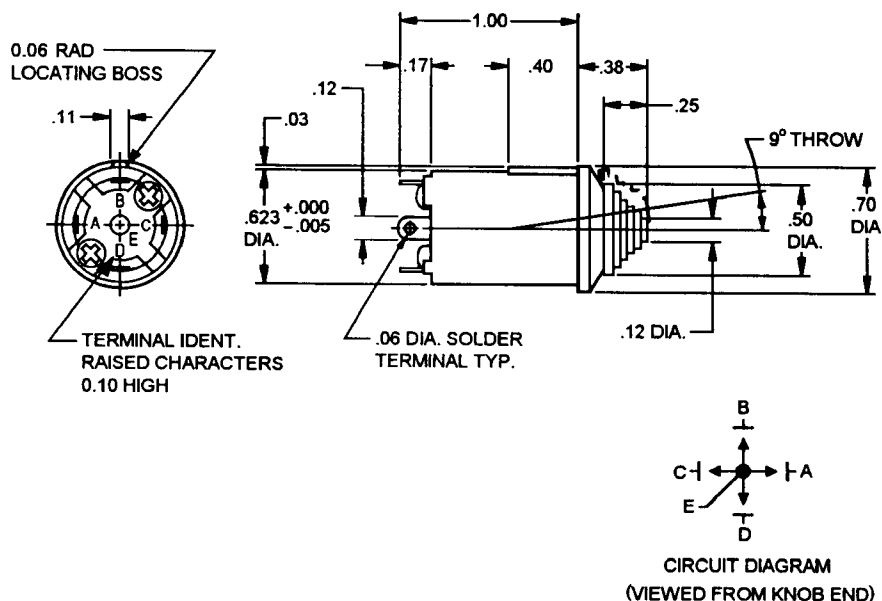
Available in 2 or 3 throw.

Available with lower operating force.

Available with low current contacts.

**407 SERIES**  
**Light Duty**  
**Miniature**

**Toggle Switch**  
**Single-Pole, 4-Throw**  
**Center-Off, Momentary**



**Specifications:**

Action: Single pole, four throw, center-off, momentary contact, positive action, toggle.

Actuation Force: 34 ozs., maximum.

Number of Positions: Five (center-off).

**Rating:**

Inductive: 1.00 ampere @ 28 VDC/120 VAC for 100,000 cycles.

**Overload:**

Inductive: 2.0 amperes @ 28 VDC/120 VAC for 400 cycles.

Contacts: Silver or silver-cadmium oxide.

Temperature Range: Operates from -67°F to +158°F.

Construction: Enclosed, cavity mount.

Weight: 0.5 oz.

**Test Data:**

Mechanical Endurance: 150,000 cycles.

Shock: 50g.

Vibration: 10 - 55 cycles per second, 0.06 DA.

Environmental: Meets temperature, altitude, temperature shock, salt fog, sand and dust, and humidity requirements of MIL-S-9419/1.

**Description:** The Mason 407 Series 4-throw switch is a miniature version of the standard 400 Series switch incorporating the same features of positive action and contact wipe.

Meets the basic mechanical, electrical and environmental requirements of MIL-S-9419/1. This switch is extremely useful in lower current applications and where allowable size is restricted.

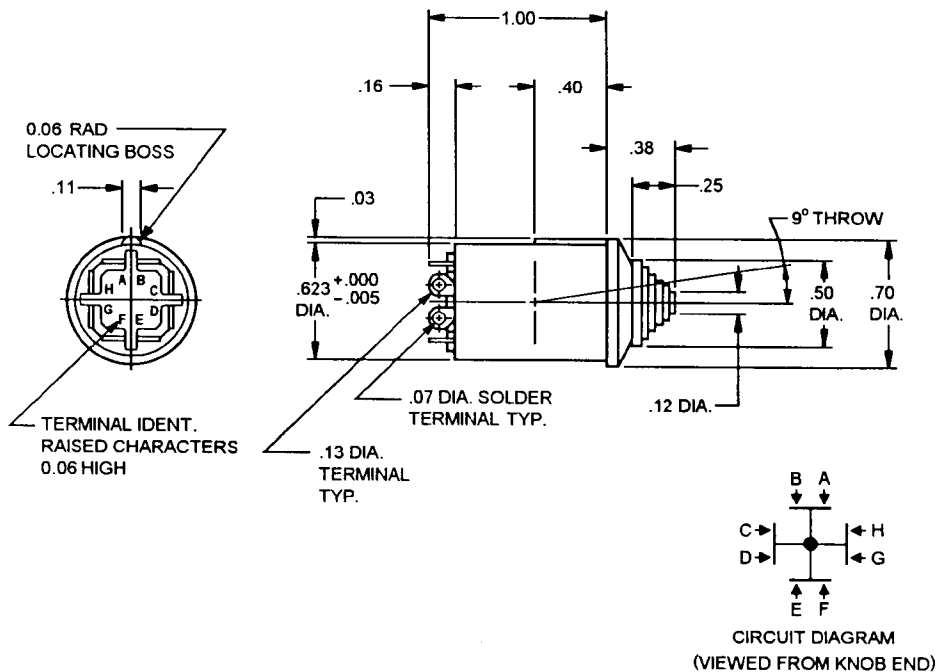
**Options:**

Knob Configuration: Available in various shapes.  
 Available in various colors.

Construction: Available with three hole panel mounting (in metal housing).  
 Available in 2 or 3 throw.  
 Available with lower operating force.  
 Available with inscribed faceplate.  
 Available with low current contacts.

**407 SERIES**  
**Light Duty**  
**Miniature**

**Toggle Switch**  
**Split Pole, 4-Throw,**  
**Center-Off, Momentary**



**Specifications:**

Action: Split pole, four-throw, center-off, momentary contact, positive action, toggle.

Actuation Force: 34 ozs. maximum.

Number of Positions: Five (center-off)

Rating:

Inductive: 1.0 ampere @ 28 VDC/120 VAC for 100,000 cycles.

Overload:

Inductive: 2.0 amperes @ 28 VDC/120 VAC for 400 cycles.

Contacts: Silver or silver-cadmium oxide.

Temperature Range: Operates from -67°F to +158°F.

Construction: Enclosed, cavity mount.

Weight: 0.5 oz.

**Test Data:**

Mechanical Endurance: 150,000 cycles.

Shock: 50g.

Vibration: 10 - 55 cycles per second, 0.06 DA.

Environmental: Meets temperature, altitude, temperature shock, salt fog, sand and dust, and humidity requirements of MIL-S-9419/1.

**Description:** The Mason 407 Series split pole, 4-Throw switch is a variation of the miniature SP4T switch that has two isolated contacts in each of the four switch positions.

It has positive action and contact wipe.

**Options:**

Knob Configuration: Available in various shapes.

Available in various colors.

Construction: Available with three hole panel mounting (in metal housing).

Available in 2 or 3 throw.

Available with lower operating force.

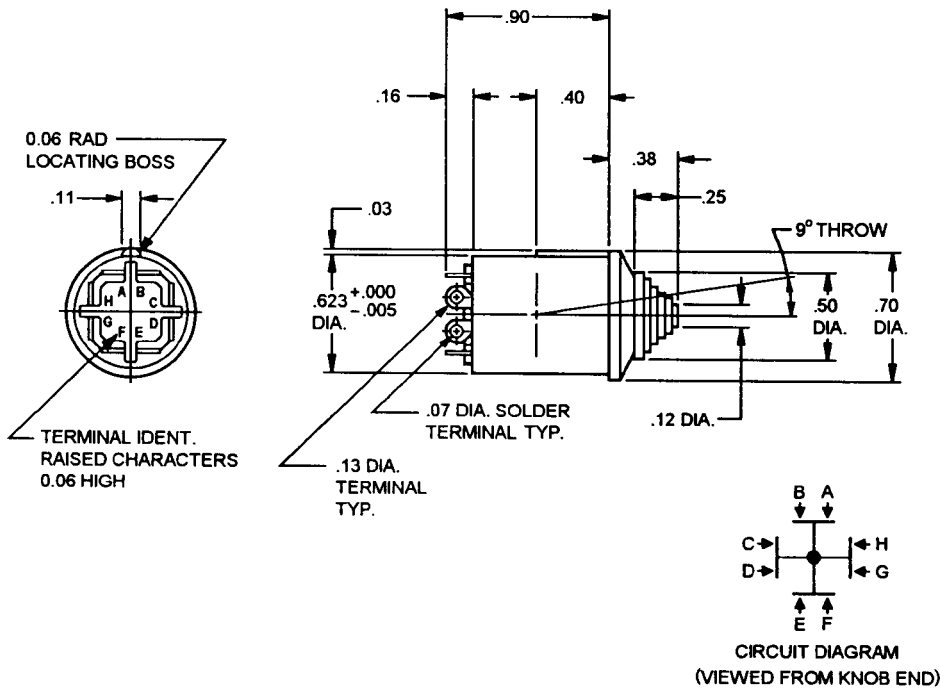
Available with center common.

Available with inscribed faceplate.

Available with low current contacts.

**407 SERIES  
Light Duty  
Miniature  
Shortened**

**Toggle Switch  
Split Pole, 4-Throw,  
Center-Off, Momentary**



**Specifications:**

Action: Split pole, four-throw, center-off, momentary contact, positive action, toggle.

Actuation Force: 34 ozs. maximum.

Number of Positions: Five (center-off)

Rating:

Inductive: 1.0 ampere @ 28 VDC/120 VAC for 100,000 cycles.

Overload:

Inductive: 2.0 amperes @ 28 VDC/120 VAC for 400 cycles.

Contacts: Silver or silver-cadmium oxide.

Temperature Range: Operates from -67°F to +158°F.

Construction: Enclosed, cavity mount.

Weight: 0.5 oz.

**Test Data:**

**Test Data:**

Mechanical Endurance: 150,000 cycles.

Shock: 50g.

Vibration: 10 - 55 cycles per second, 0.06 DA.

Environmental: Meets temperature, altitude, temperature shock, salt fog, sand and dust, and humidity requirements of MIL-S-9419/1.

**Description:** A shortened version of the Mason 407 Series split pole, miniature, 4-Throw switch. It retains all the features of the standard switch, but is 0.10 inch shorter in length for use where space is at a premium.

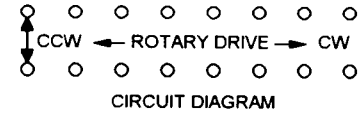
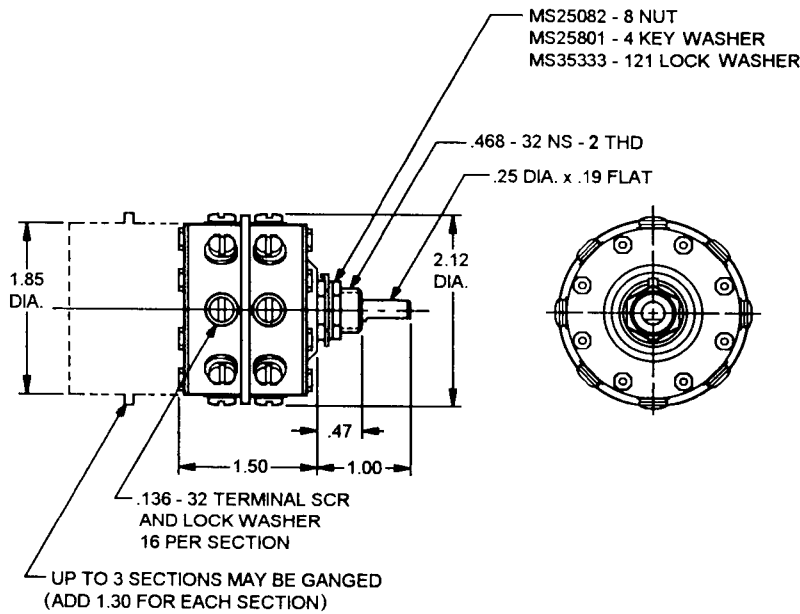
**Options:**

Knob Configuration: Available in various shapes.  
Available in various colors.

Construction: Available with three hole panel mounting (in metal housing).  
Available in 2 or 3 throw.  
Available with lower operating force.  
Available with center common.  
Available with inscribed faceplate.  
Available with low current contacts.

**100 SERIES**  
**Extra Heavy Duty**  
**Screw Terminals**

**Rotary Switch**  
**8 Position**  
**Maintaining**



**Specifications:**

Action: Single pole, 45° indexing, double make, double break, non-shorting, snap action rotary.

Number of Positions: Eight.

Rating:

Resistive: 50 amperes @ 28 VDC/115 VAC for 10,000 cycles.

Inductive: 35 amperes @ 28 VDC/115 VAC for 10,000 cycles.

Overload: 60 amperes @ 28 VDC/115 VAC for 100 cycles.

Contacts: Solid silver.

Temperature Range: Operates from -68°F to +158°F.

Construction: Enclosed, single hole panel mount.

**Test Data:**

Mechanical Endurance: 10,000 cycles.

Shock: 50g.

Vibration: 10 - 55 cycles per second, 0.06 DA.

Environmental: Meets temperature, altitude, temperature shock, salt fog, sand and dust, and humidity requirements of MIL-E-5272.

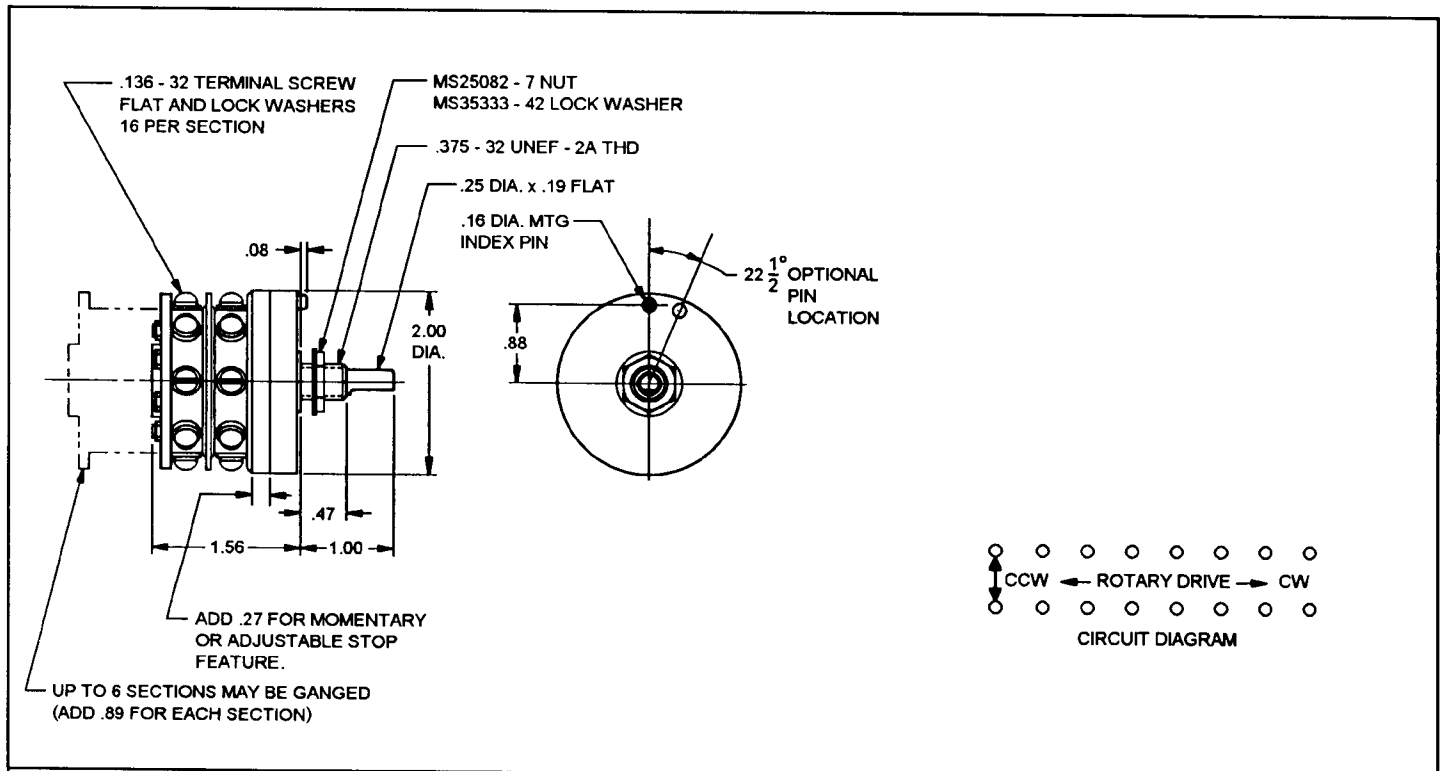
**Description:** The Mason 100 Series rotary switch is an extra heavy duty device capable of switching large electrical loads directly, eliminating the need for intermediate relays. The double make, double break contacts divide arcing, load and heat over two points. High contact pressure assures low volt drop, while positive action and stored energy assures rapid contact transfer from position to position.

**Options:**

- Construction: Available with insulation cover for high voltage protection.
- Available with momentary action.
- Available with stops to limit rotation.
- Available with up to three sections.
- Available with external bus straps.
- Available with terminal markings.

**103 SERIES  
Heavy Duty  
Screw Terminals**

**Rotary Switch  
8 Position  
Maintaining**



**Specifications:**

Action: One to four poles per section, 45° indexing, double make, double break, non-shorting, snap action rotary.

Number of Positions: Eight.

**Rating:**

Resistive: 35 amperes @ 28 VDC/115 VAC for 10,000 cycles.

Inductive: 20 amperes @ 28 VDC/115 VAC for 10,000 cycles.

Overload: 50 amperes @ 28 VDC/115 VAC for 100 cycles.

Contacts: Solid silver.

Temperature Range: Operates from -65°F to +160°F.

Construction: Enclosed, single hole panel mount, screw terminals.

**Test Data:**

Mechanical Endurance: 15,000 cycles.

Shock: 60g.

Vibration: 10 - 55 cycles per second, 0.06 DA.

Environmental: Meets temperature, altitude, temperature shock, salt fog, sand and dust, and humidity requirements of MIL-E-5272.

**Description:**

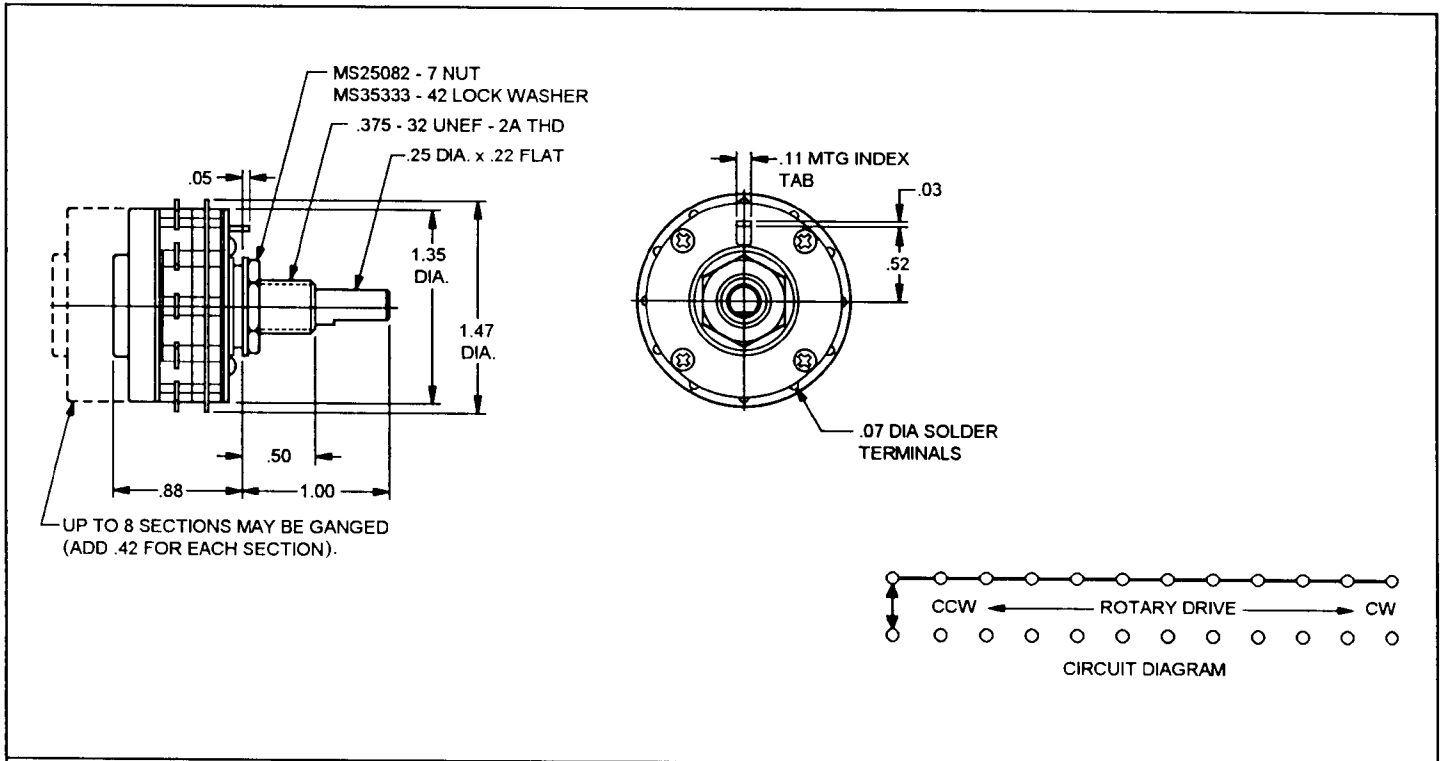
The Mason 103 Series rotary switch is an extra heavy duty device capable of switching large electrical loads directly eliminating the need for intermediate relays. The double make, double break contacts divide arcing, load and heat over two points. High contact pressure assures low volt drop, while positive action and stored energy assures rapid contact transfer from position to position.

**Options:**

- Construction:**
- Available with .468-32 NS-2 threaded bushing and hardware.
  - Available with momentary action (adds .27 inch to length).
  - Available with fixed stops to limit rotation.
  - Available with adjustable stops (adds .27 inch to length).
  - Available with one, two or four poles per section.
  - Available with up to six sections (maintaining).
  - Available with up to two sections (momentary).
  - Available with special shafts.
  - Available with external bus straps.
  - Available with terminal markings.

**104 SERIES  
Medium Duty  
Solder Terminals**

**Rotary Switch  
12 Position**



**Specifications:**

Action: One to six poles per section, 30° indexing, double make, double break, non-shorting, rotary.

Number of Positions: Twelve.

**Rating:**

Resistive: 5 amperes @ 28 VDC/120 VAC for 10,000 cycles.

Inductive: 3 amperes @ 28 VDC/120 VAC for 10,000 cycles.

Overload: 10 amperes @ 28 VDC/120 VAC for 50 cycles.

Contacts: Solid silver.

Temperature Range: Operates from -67°F to +200°F.

Construction: Enclosed, single hole panel mount, solder terminals, adjustable stops.

**Test Data:**

Mechanical Endurance: 15,000 cycles.

Shock: 50g.

Vibration: 5 to 2,000 cycles per second, 5g.

Environmental: Meets temperature, altitude, temperature shock, salt fog, sand and dust, and humidity requirements of MIL-E-5272.

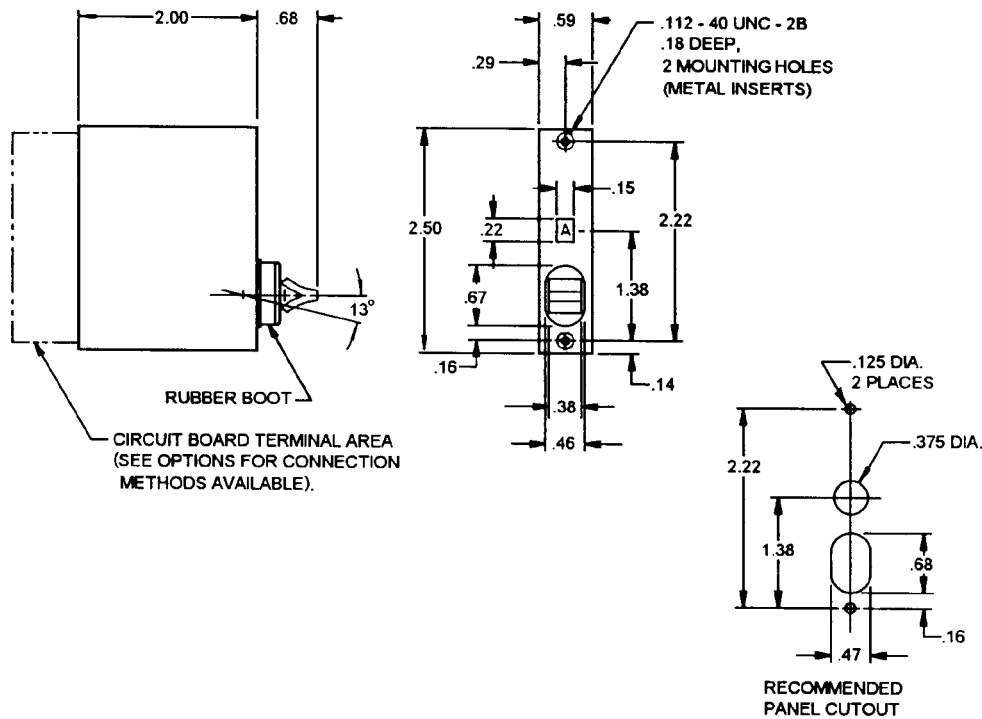
**Description:** The Mason 104 Series rotary switch is medium duty device that incorporates high contact pressure for low volt drop and double make, double break contacts to divide arcing, load and heat over two points.

**Options:**

- Construction: Available with .468 - 32 NS-2 threaded bushing and hardware.
- Available with momentary action (adds length).
- Available with fixed stops.
- Available with up to six poles per section.
- Available with up to eight sections.
- Available with shorting contacts.
- Available with solenoid or motor drive.
- Available with shaft "O" ring seal.
- Available with "O" ring panel seal.
- Available with variable detent torque.
- Available with push-to-turn feature.
- Available with high shock and vibration resistant contacts.

**902 SERIES  
Light Duty**

**Printed Circuit Switch  
27 Position, Lever Operated,  
Bi-Directional**



**Specifications:**

Action: Multi-pole, 27 position, shorting or non-shorting, bi-directional toggle action.

Actuation Force: 10 to 30 ozs.

Number of Positions: 27.

Color: Case and wheel matte black. Wheel characters matte white.

Character height: .125.

Rating: 125 milliamps @ 28 VDC/120 VAC for 100,000 cycles.

Initial Contact Resistance: 100 milliohms, max.

Contacts: Gold plated beryllium copper. Circuit board: gold over nickel.

Temperature Range: Operates from -65°F to +180°F.

Construction: Sealed face, panel mount.

Weight: 2.0 ozs., maximum.

**Test Data:**

Mechanical Endurance: 100,000 operations.

Shock: 100g.

Vibration: 15g.

Environmental: Meets humidity, rain, fungus, salt spray, thermal shock, and sand and dust, requirements of MIL-STD-810.

**Description:** The Mason 902 Series printed circuit board switch provides direct conversion from the dial setting to a coded electrical output. This direct display reduces operator error in positioning and with 27 positions can replace as many as 3 digital switches, using up less panel space. Side by side mounting of switches increases their usefulness and provides maximum circuit density.

The toggle lever may be operated in either direction to move the letter in view in sequence. Snap feel, fast action and front seal are standard.

**Options:**

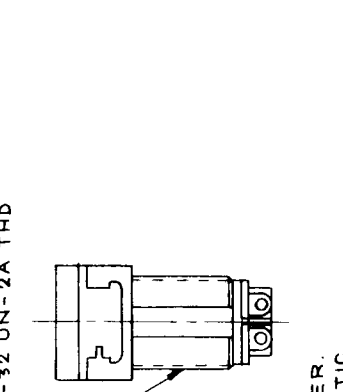
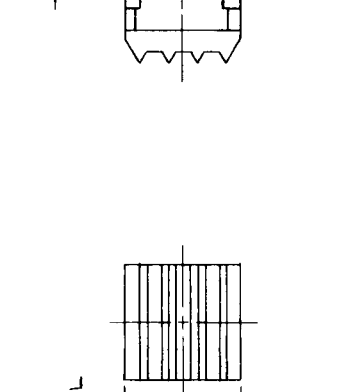
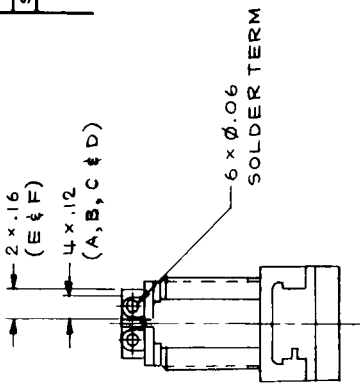
**Connection Methods:** Available with plated through holes. Available with eyelets. Available with turret terminals. Available with wire leads. Available with electronic components mounted. Available with interface for edge mounted connector.

**Coding:** Available with up to four poles. Available with up to nine "ON" connections at a time.

**Construction:** Available with choice of wheel characters and colors.

REV STATUS OF SHEETS	
SH	REV
1	
2	
3	

REVISIONS		DATE	APPROVED
SYM	DESCRIPTION		



FIND NO	QTY	CODE	IDENT NO	PART OR IDENTIFYING NUMBER	NOMENCLATURE OR DESCRIPTION	NOTE

MATERIALS OR PARTS LIST	

UNLESS OTHERWISE SPECIFIED DIMENSIONS ARE IN INCHES	
DECIMALS	TOLERANCES
.XX ± .05	± .1"
XXX ± .010	± .1"
HEAT TREAT	FINISH
	NA

SYMBOLS	PARTS LIST

NOTES	APPROVED

SCALE	WT	50 MAX	SHEET

MASON ELECTRIC COMPANY, INC.  
 SWITCH, SLIDE, DPDT,  
 CENTER OFF-ON (AS SHOWN)  
 MOMENTARY-MAINTAINING CONT.

SIZE (CODE IDENT NO)  
**C 81579**

- 6 HARDWARE NOT SHOWN ON OTHER VIEWS FOR CLARITY.  
 5 TERMINALS SUITABLY IDENTIFIED.  
 4. MATERIALS: TERMINALS ARE GOLD PLATED BERYLLIUM COPPER. SWITCH CASE & KNOB ARE BLACK MOLDED PLASTIC.  
 3. ACTUATION FORCE: 24 ± 10 OZ FROM CENTER TO EITHER EXTREME POSITION. 10 OZ MIN RETURN.  
 2. MECHANICAL & ELECTRICAL LIFE: 50,000 CYCLES.  
 1. ELECTRICAL RATING: 3 AMPS INDUCTIVE; 5 AMPS RESISTIVE AT 28 VDC.

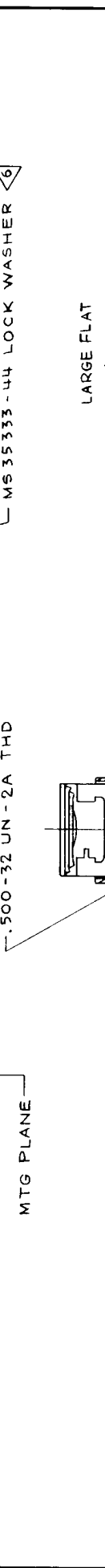
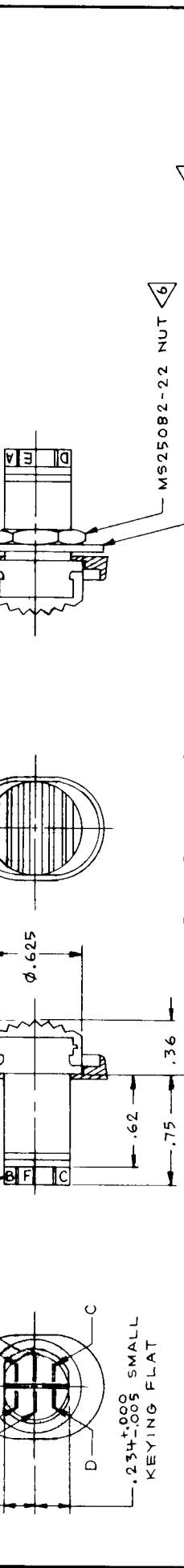
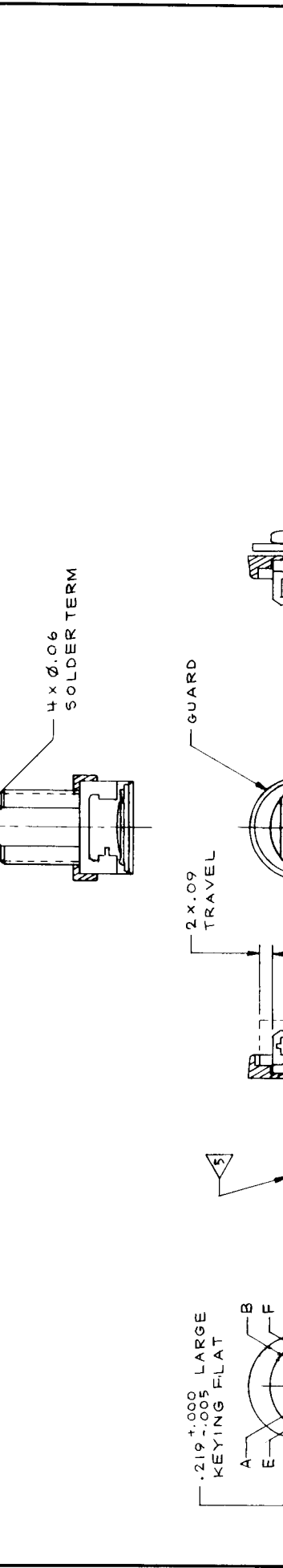
NOTES, SPECIFIC:

2. DIMENSIONS APPLY AFTER PLATING.  
 1. REMOVE ALL BURRS AND SHARP EDGES; SPRUE AND ALL FLASH; GATES, FINS AND RISERS.  
 NOTES, GENERAL, UNLESS OTHERWISE SPECIFIED AND AS APPLICABLE:

REV STATUS OF SHEETS	
SH	REV
1	
2	
3	

REVISIONS		
SYM	DESCRIPTION	DATE

MATERIALS OR PARTS LIST		NOMENCLATURE OR DESCRIPTION		NOTE	
FIND NO	QTY REQD	CODE IDENT NO	PART OR IDENTIFYING NUMBER		



6 HARWARE NOT SHOWN ON OTHER VIEWS FOR CLARITY.

5 TERMINALS SUITABLY IDENTIFIED.

4. MATERIALS: TERMINALS ARE GOLD PLATED BERYLLIUM COPPER. SWITCH CASE & KNOB ARE BLACK MOLDED PLASTIC. GUARD IS BLACK ANODIZED ALUMINUM ALLOY.

3. ACTUATION FORCE: 24 ± 10 OZ FROM CENTER TO EITHER EXTREME POSITION. 100Z MIN RETURN.

2. MECHANICAL & ELECTRICAL LIFE: 50,000 CYCLES.

1. ELECTRICAL RATING: 3 AMPS INDUCTIVE; 5 AMPS RESISTIVE AT 28 VDC.

NOTES, SPECIFIC:

2. DIMENSIONS APPLY AFTER PLATING.  
1. REMOVE ALL BURRS AND SHARP EDGES; SPRUE AND ALL FLASH; GATES, FINS AND RISERS. NOTES, GENERAL, UNLESS OTHERWISE SPECIFIED AND AS APPLICABLE:

UNLESS OTHERWISE SPECIFIED DIMENSIONS ARE IN INCHES  
DECIMALS TOLERANCES SURF FINISH  
.XX ±.05 ±1" NA  
.XXX ±.010  
HEAT TREAT FINISH

SYMBOLS  
PARTS LIST  
FIND NO

NOTES  
APPROVED

PREPARED  
CHECKED  
APPROVED

SIZE CODE IDENT NO  
**C 81579**

SCALE / WT

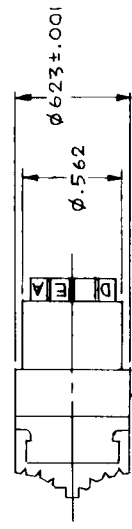
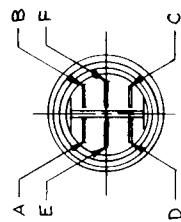
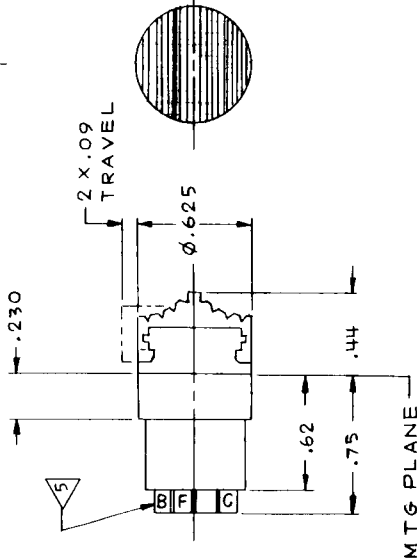
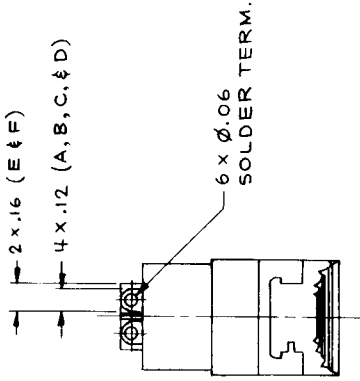
SHEET

MASON ELECTRIC COMPANY, INC

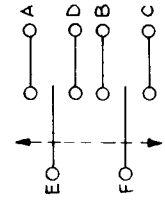
SWITCH, SLIDE, DPDT,  
CENTER OFF, MAINTAINING CONT

REV STATUS OF SHEETS	
SH	REV
1	
2	
3	

REVISIONS		DATE	APPROVED
SYM	DESCRIPTION		



BLACK ANODIZED ALUMINUM ALLOY  
MTG ADAPTER BONDED IN PLACE



CIRCUIT DIAGRAM

- 5 TERMINALS SUITABLY IDENTIFIED.
- 4. MATERIALS: TERMINALS ARE GOLD PLATED BERYLLIUM COPPER. SWITCH CASE & KNOB ARE BLACK MOLDED PLASTIC.
- 3. ACTUATION FORCE: 24 ± 10 OZ FROM CENTER TO EITHER EXTREME POSITION.
- 2. MECHANICAL & ELECTRICAL LIFE: 50,000 CYCLES.
- 1. ELECTRICAL RATING: 3 AMPS INDUCTIVE; 5 AMP RESISTIVE AT 28 VDC.

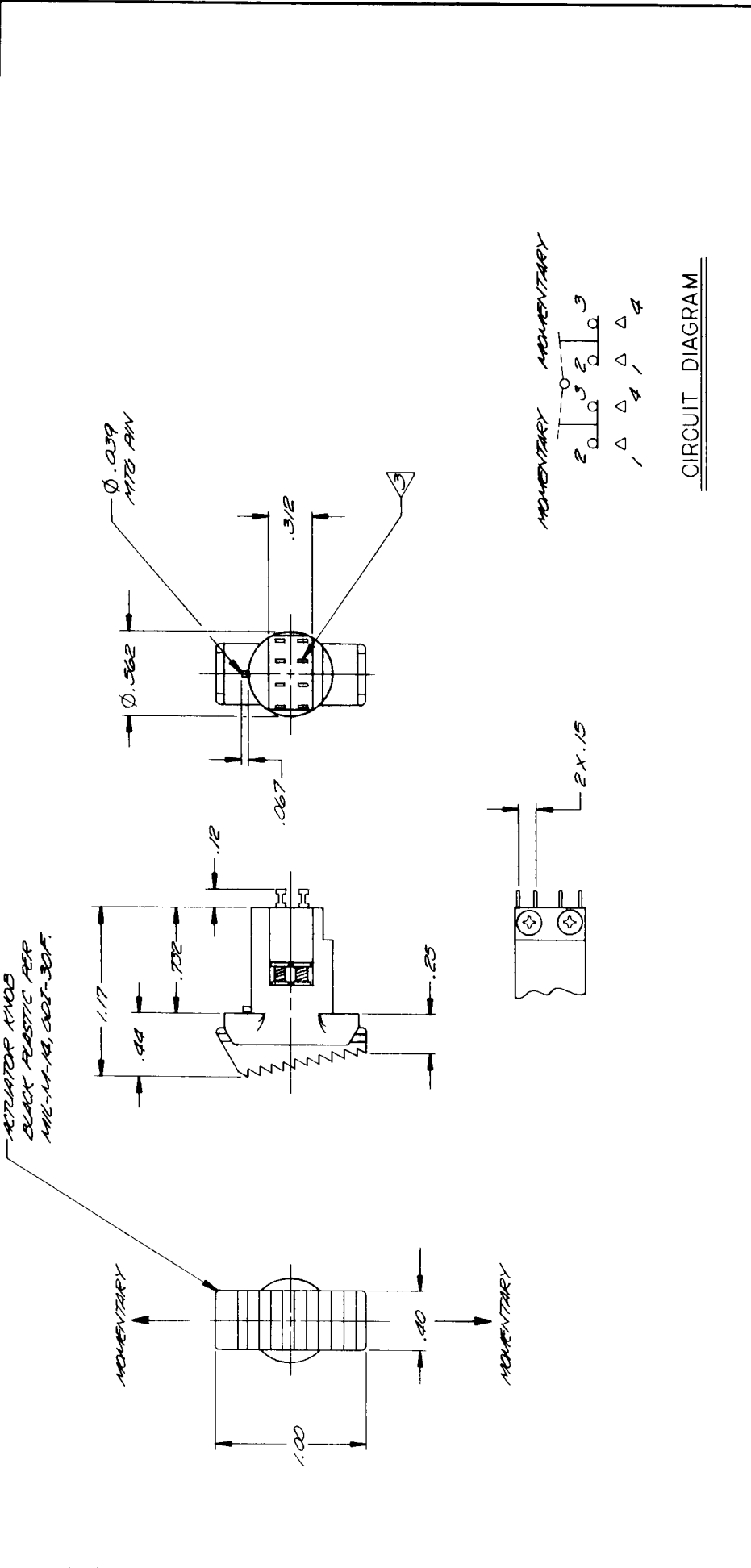
NOTES, SPECIFIC:

- 2. DIMENSIONS APPLY AFTER PLATING.
  - 1. REMOVE ALL BURRS AND SHARP EDGES; SPRUE AND ALL FLASH; GATES, FINS AND RISERS.
- NOTES, GENERAL, UNLESS OTHERWISE SPECIFIED AND AS APPLICABLE:

FIND NO	QTY REQD	CODE IDENT NO	PART OR IDENTIFYING NUMBER	NOMENCLATURE OR DESCRIPTION	NOTE
MATERIALS OR PARTS LIST					
UNLESS OTHERWISE SPECIFIED DIMENSIONS ARE IN INCHES					
TOLERANCES					
DECIMALS ANGLES SURF FNISH					
XX ± .03 ± 1° NA					
XXX ± .010					
HEAT TREAT			FINISH		
SYMBOLS			PARTS LIST		
NOTES			FIND NO		
PREPARED			CHECKED		
APPROVED			APPROVED		
SIZE CODE IDENT NO			SCALE / WT .50 OZ MAX SHEET		
C 81579					
MASON ELECTRIC COMPANY, INC					
SWITCH, SLIDE, DPDT, CENTER OFF, MAINTAINING CONTACT					

REV STATUS OF SHEETS	
SH	REV
1	
2	
3	

REVISIONS	
DESCRIPTION	DATE APPROVED



FIND NO	QTY	CODE IDENT NO	PART OR IDENTIFYING NUMBER	NOMENCLATURE OR DESCRIPTION	NOTE
MATERIALS OR PARTS LIST					
UNLESS OTHERWISE SPECIFIED DIMENSIONS ARE IN INCHES TOLERANCES DECIMALS   ANGLES   SURF FINISH XX ±.01 ±1° NA ✓ XXX ±.005 ±1° NA ✓ HEAT TREAT FINISH					
SYMBOLS <input type="checkbox"/> PARTS LIST <input type="checkbox"/> FIND NO					
PREPARED CHECKED APPROVED					
SIZE CODE IDENT NO <b>C 81579</b>					
SCALE / WT SHEET					
MASON ELECTRIC COMPANY, INC. SWITCH, SLIDE, DPDT, CTR-ON, NC, NO, MOMENTARY					

3. SWITCHES CONFORM TO MIL-S-8803/101.  
 2. ACTUATION FORCE: 40 TO 10 OZ.  
 1. ELECTRICAL RATINGS: 0.4 TO 2 AMP MD AT 28 VDC.

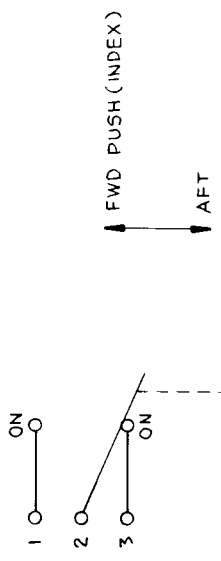
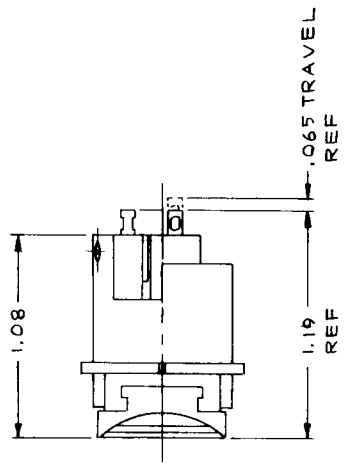
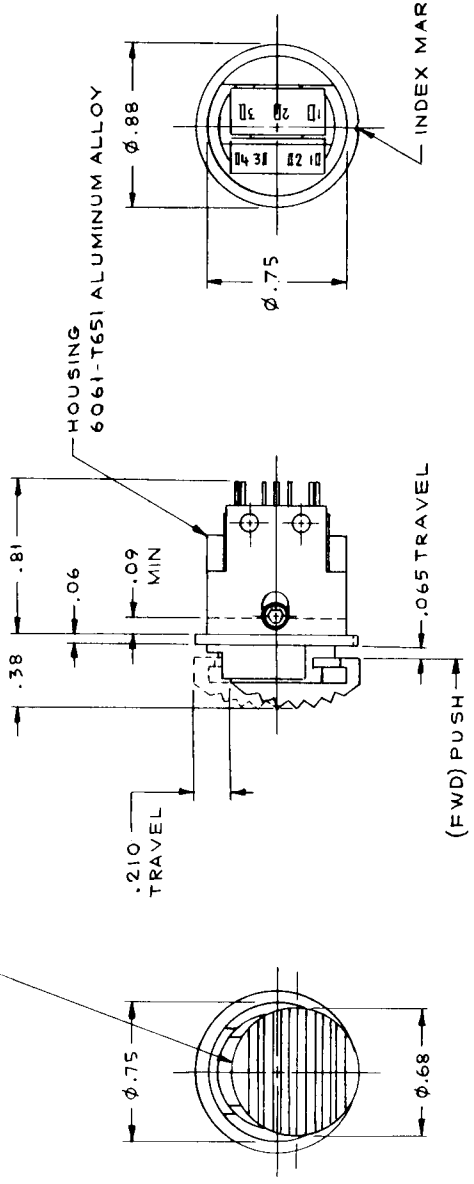
NOTES, SPECIFIC:

2. DIMENSIONS APPLY AFTER PLATING  
 1. REMOVE ALL BURRS AND SHARP EDGES; SPRUE AND ALL FLASH; GATES, FINS AND RISERS.  
 NOTES, GENERAL, UNLESS OTHERWISE SPECIFIED AND AS APPLICABLE:

REV STATUS OF SHEETS	
SR	REV
1	
2	
3	

REVISIONS		DATE	APPROVED
SYM	DESCRIPTION		

ACTUATOR KNOB  
6061-T6 ALUMINUM ALLOY, GRAY  
ANODIZE PER MIL-A-8625, TYPE II, CLASS 2



CIRCUIT DIAGRAM

4. WHEN PUSH BUTTON IS ACTIVATED, TOGGLE SWITCH FUNCTION IS LOCKED - OUT.

3. SWITCH MEETS APPLICABLE REQUIREMENTS OF MIL-S-83731/9 AND MIL-S-8805/101.

2. ACTUATION FORCES: FROM EITHER EXTREME POSITION 24 ± 10 OZ SLIDE AND 32 ± 10 OZ PUSH DOWN.

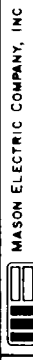
1. ELECTRICAL RATING: 2 AMP INDUCTIVE, 5 AMP RESISTIVE AT 28 VDC.

NOTES, SPECIFIC:

2. DIMENSIONS APPLY AFTER PLATING.

1. REMOVE ALL BURRS AND SHARP EDGES; SPRUE AND ALL FLASH; GATES, FINS AND RISERS. NOTES, GENERAL, UNLESS OTHERWISE SPECIFIED AND AS APPLICABLE:

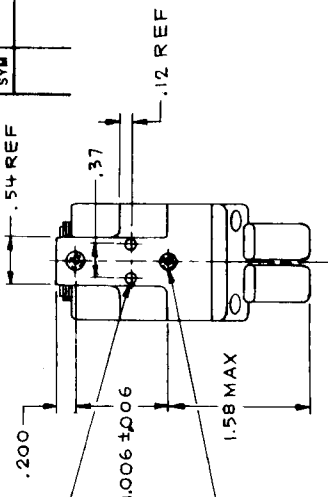
FIND NO	QTY	CODE	PART OR IDENTIFYING NUMBER	NOMENCLATURE OR DESCRIPTION	NOTE
MATERIALS OR PARTS LIST					
UNLESS OTHERWISE SPECIFIED DIMENSIONS ARE IN INCHES					
TOLERANCES					
DECIMALS ±.03					
ANGLES ±1°					
SURF FNISH NA					
HEAT TREAT FINISH					
SYMBOLS					
PARTS LIST					
FIND NO					
NOTES					
PREPARED					
CHECKED					
APPROVED					
SIZE CODE IDENT NO					
C 81579					
SCALE / WT					
SHEET					



MASON ELECTRIC COMPANY, INC  
SWITCH, SLIDE, SPDT, ON-ON  
SWITCH, PUSH BUTTON, SP,  
2 CKT, NC, NO, MC

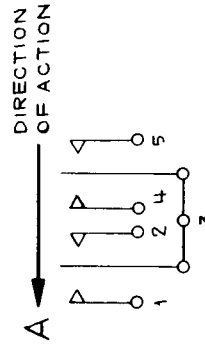
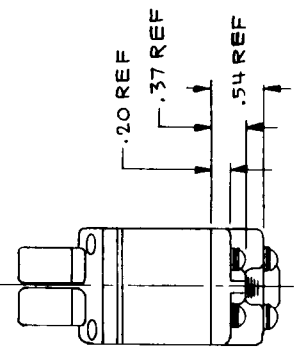
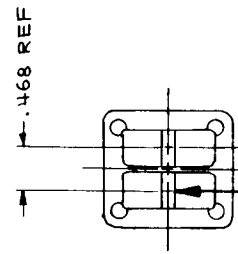
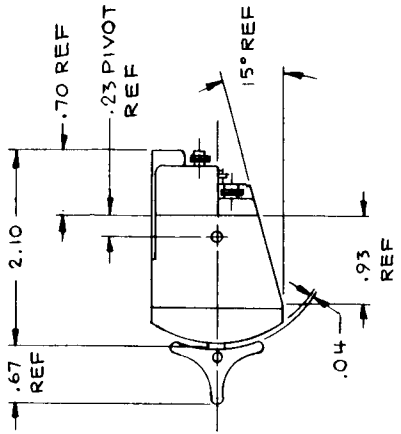
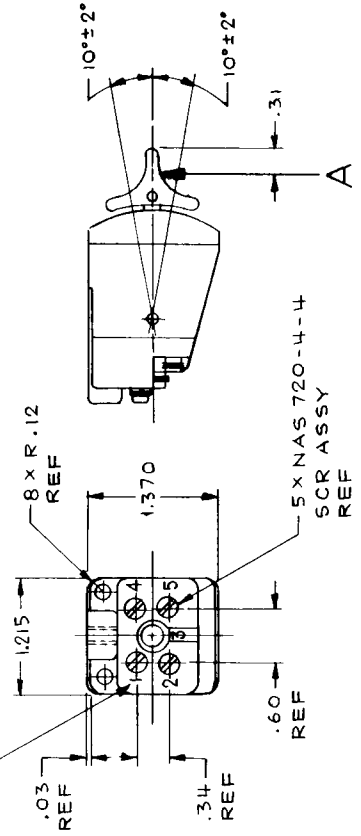
REV STATUS OF SHEETS	
SH	REV
1	
2	
3	

REVISIONS		
SYM	DESCRIPTION	DATE APPROVED



2 X .164 - 32 UNC - 2B THD  
.28 MAX DEPTH,  
GRES METAL INSERTS  
MOLDED IN PLASTIC  
HOUSING

TERM IDENT. .06 MIN X .01 MIN  
RAISED CHARACTERS REF



SCHMATIC DIAGRAM

4. SWITCH HOUSING, ACTUATOR KNOB & TERMINAL BARRIER ARE MOLDED ORTHO DIALLYL PHTHALATE PLASTIC PER MIL-M-14, GDI-30F, BLACK.

3. KNOB & CAP HAVE MATT BLACK FINISH.

2. ACTUATION & RETURN FORCE (EACH HALF): .80 TO 1.9 LBS MAKE, .40 LBS MIN BREAK MEASURED AT POINT "A" OF THE ACTUATOR KNOB AS SHOWN (BOTH DIRECTIONS)

1. ELECTRICAL RATING: 5AMP INDUCTIVE AT 28±2 VDC.

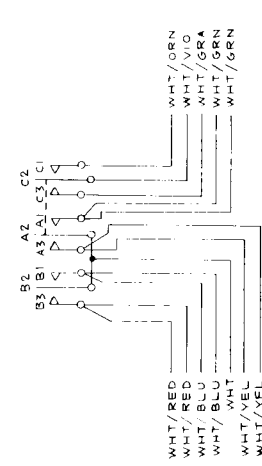
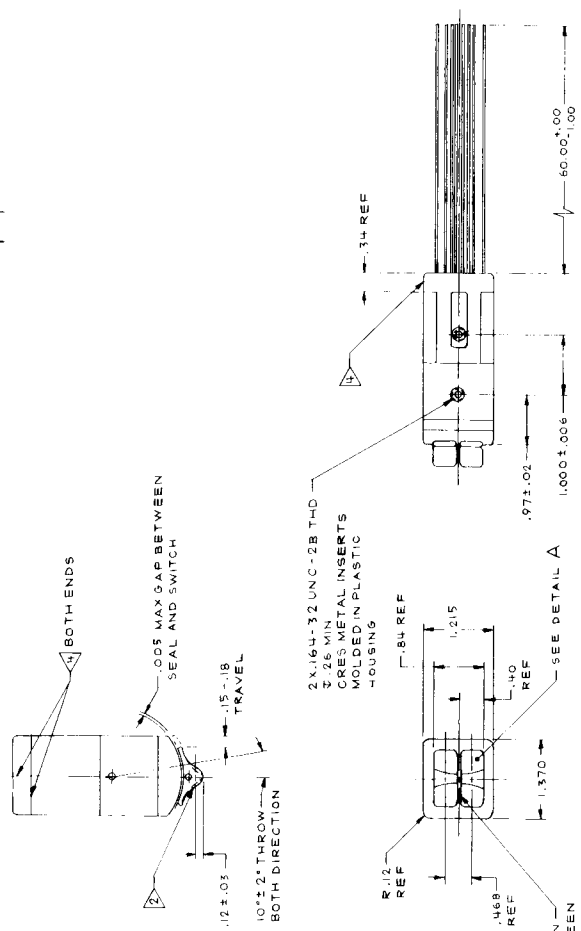
NOTES, SPECIFIC:

2. DIMENSIONS APPLY AFTER PLATING.

1. REMOVE ALL BURRS AND SHARP EDGES; SPRUE AND ALL FLASH; GATES, FINS AND RISERS. NOTES, GENERAL, UNLESS OTHERWISE SPECIFIED AND AS APPLICABLE:

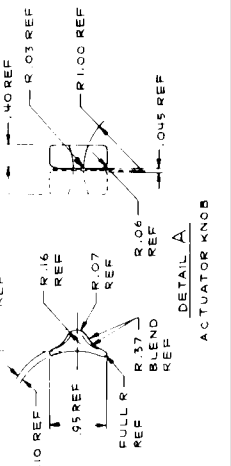
FIND LOTY CODE		PART OR IDENTIFYING NUMBER		NOMENCLATURE OR DESCRIPTION		NOTE
NO	NO					
MATERIALS OR PARTS LIST						
UNLESS OTHERWISE SPECIFIED DIMENSIONS ARE IN INCHES						
TOLERANCES						
XX	±.01	ANGLES		SURF FINSH		
XXX	±.005	±1°		NA		
HEAT TREAT		FINISH				
SYMBOLS		PARTS LIST		PREPARED		
NOTES		FIND NO		CHECKED		
				APPROVED		
				MASON ELECTRIC COMPANY, INC		
				SIZE CODE IDENT NO		
				C 81579		
				SCALE / WT. 5 LB MAX SHEET		

REV. STATUS		APPROVED	
REV	DATE	BY	CHK
1			
2			
3			



CIRCUIT DIAGRAM

FIND QTY	CODE	PART OR IDENTIFYING NUMBER	MANUFACTURE OR DESCRIPTION	NOTE
NO	REQD	DEFT NO	MATERIALS OR PARTS LIST	
			MASON ELECTRIC COMPANY, INC	
DIMENSIONS SPECIFIED IN DECIMALS UNLESS OTHERWISE SPECIFIED DIMENSIONS IN PARENTHESES ARE FOR INFORMATION ONLY DIMENSIONS IN ANGLES ARE FOR FINISH DIMENSIONS IN SQUARES ARE FOR FINISH DIMENSIONS IN CIRCLES ARE FOR FINISH				
PREPARED BY: [ ] CHECKED BY: [ ] APPROVED BY: [ ]				
SYMBOLS: [ ] FINISH: [ ] DIMENSIONS: [ ]				
SIZE CODE IDENT NO: <b>D 81579</b>				
SCALE: 1" = 1.00"				

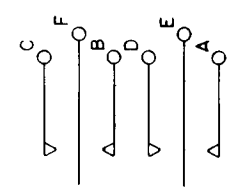
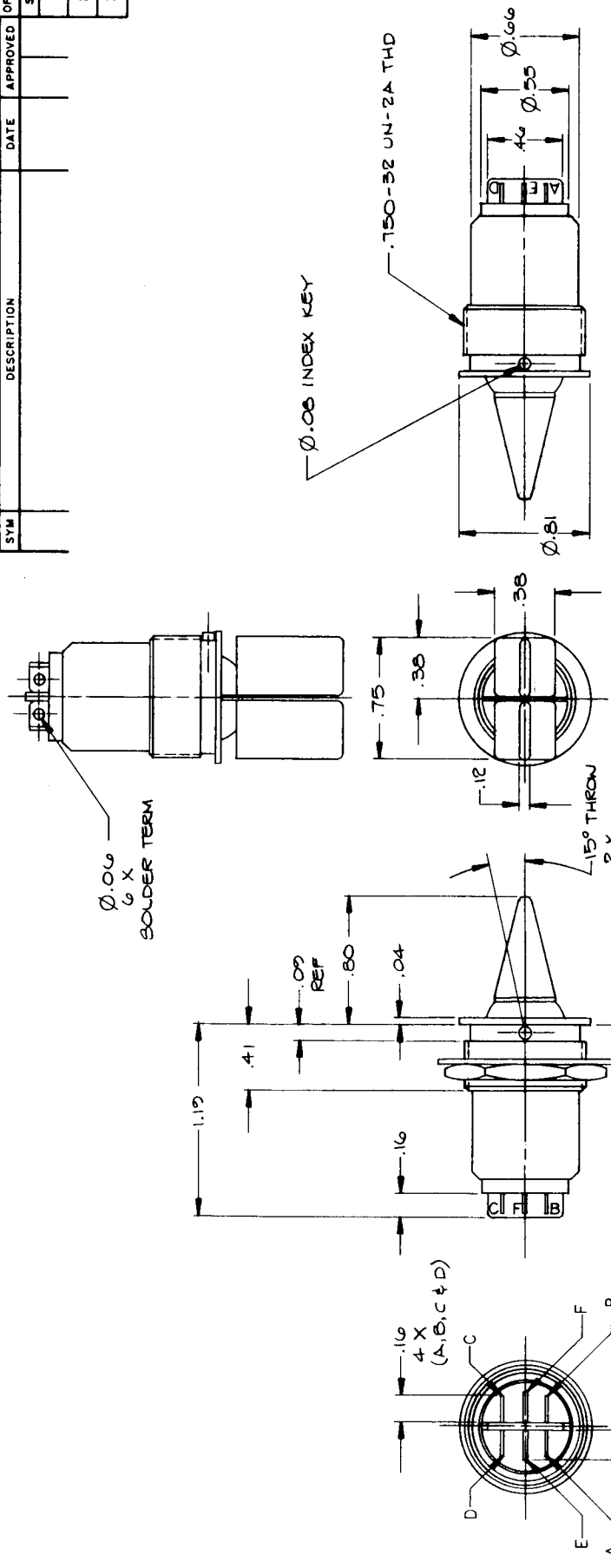


DETAIL A  
ACTUATOR KNOB

- THESE ARE APPROXIMATE LOCATIONS FOR WIRES EXITING THE SWITCH AND ARE FOR REFERENCE ONLY.
1. SWITCH SWITCHESS WITH .005 GAP BETWEEN SEAL AND SWITCH
  2. DIMENSIONS APPLY AFTER PLATING
  3. KNOB & CAP HAVE DARK BROWN FINISH.
  4. ACTUATOR RETURN FORCE (EACH HALF) .80 TO 1.0 LBS MAKE .40 LBS MIN BREAK MEASURED AT POINT OF ACTUATOR KNOB AS SHOWN (BOTH DIRECTIONS).
  5. ELECTRICAL RATING AT 28 VDC: TERMINALS A1, A2, A3, B1, B2, B3 5.0 AMPS INDUCTIVE 15 VDC; TERMINALS C1, C2, C3 6.0-8.0 MILLIAMPS INDUCTIVE.
- NOTES: SPECIFIC

REV STATUS		REV STATUS	
SH	REV	SH	REV
1		1	
2		2	
3		3	

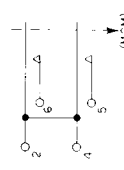
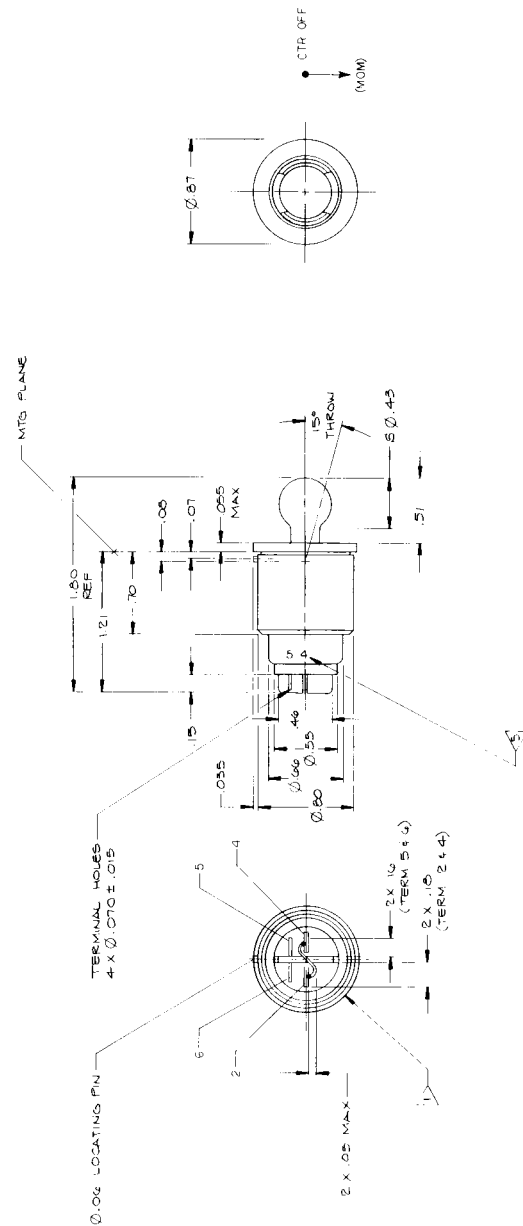
REVISIONS			
SYM	DESCRIPTION	DATE	APPROVED



FIND NO	QTY REQD	CODE IDENT NO	PART OR IDENTIFYING NUMBER	NOMENCLATURE OR DESCRIPTION	NOTE
MATERIALS OR PARTS LIST					
UNLESS OTHERWISE SPECIFIED DIMENSIONS ARE IN INCHES			MASON ELECTRIC COMPANY, INC		
DECIMALS (ANGLES) SURF FINISH			SWITCH, ROCKER, TOGGLE, CTR-OFF, MC, DUAL ACTUATION, DPDT		
XX ± 0.1			SIZE CODE IDENT NO		
XXX ± .005			C 81579		
HEAT TREAT FINISH			SCALE / WT .33 OZ MAX. SHEET		
SYMBOLS			PREPARED		
NOTES			CHECKED		
PARTS LIST			APPROVED		
FIND NO					

- NOTES, SPECIFIC:
- MATERIALS: TERMINALS ARE GOLD PLATED BERYLLIUM COPPER. INNER CASE AND KNOBS ARE MOLDED BLACK DIALYL PHTHALATE PLASTIC. OUTER CASE IS BLACK ANODIZED ALUMINUM.
  - DIMENSIONS APPLY AFTER PLATING.
    - REMOVE ALL BURRS AND SHARP EDGES; SPRUE AND ALL FLASH; GATES, FINS AND RISERS. NOTES, GENERAL, UNLESS OTHERWISE SPECIFIED AND AS APPLICABLE.

REVISIONS		DATE	APPROVED	REV STATUS
ITEM	DESCRIPTION			SHEET
1				1
2				2
3				3



CIRCUIT DIAGRAM

- ENVIRONMENTAL SPECIFICATIONS:
  - VIBRATION: PER MIL-STD-202, METHOD 204, TEST CONDITION C AND MIL-STD-202, METHOD 210, TEST CIRCUIT B.
  - SHOCK: PER MIL-STD-202, METHOD 215, TEST CONDITION A, AND MIL-STD-202, METHOD 210, TEST CIRCUIT B.
  - MECHANICAL ENDURANCE: PER MIL-S-87931, PARA 4.8.10, 20,000 CYCLES AT 45 DEG C, AND 20,000 CYCLES AT -71 DEG C.
- ELECTRICAL SPECIFICATIONS:
  - SULATION RESISTANCE AT 200VDC: 1000 MOHMS MIN FOR 2 MIN.
  - DIELECTRIC STRENGTH AT 600VAC RMS: 0.5 AMP MAX FOR 1 MIN.
  - TERMINAL MARGINS: .12 HIGH IN WHITE EPOXY INK.
  - ELECTRICAL RATING AT 25VDC: 5 AMP AND 5 AMP RES.
  - ACTUATION FORCE: 30 ± 0.2.
  - ELECTRICAL CONTACT IS MADE OPPOSITE OF THROW.
- MATERIALS AND FINISH:
  - TERMINAL GOLD PLATED BERYLLIUM COPPER
  - INNER CASE AND KNOB MOULDED DIALYL PHTHALATE PER MIL-M-4, COLOR 27035 BLACK PER FED-STD-595.
  - OUTER CASE ALUMINUM ALLOY PER GG-A-205/3, ANODIZED PER MIL-A-8625, TYPE II, CLASS 2, COLOR 27035 BLACK PER FED-STD-595.

NOTES, SPECIFIC

- DIMENSIONS APPLY AFTER PLATING
  - REMOVE ALL BURRS AND SHARP EDGES, SPRUE AND ALL FLASH, GATES, FINS AND RISERS
- NOTES, GENERAL, UNLESS OTHERWISE SPECIFIED AND AS APPLICABLE.

ITEM NO	QTY	QTY REQD	QTY ON HAND	QTY IN STOCK	QTY IN PROCESS	QTY IN TRANSIT	QTY IN WAREHOUSE	QTY IN OFFICE	QTY IN SHOP	QTY IN FIELD
1										

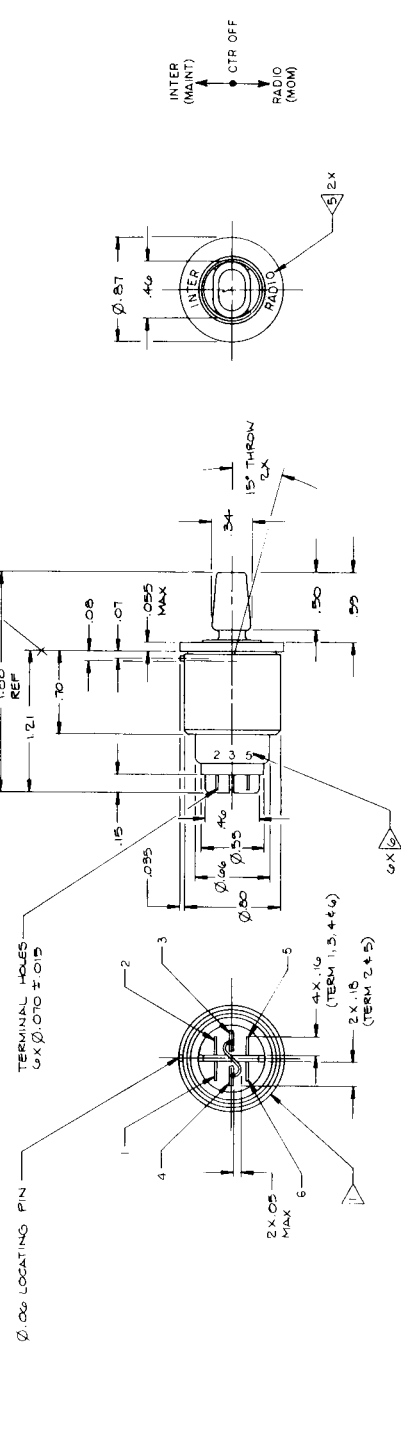
DESIGN NO	81579
REV	1
DATE	7/1
SCALE	2/1
WT	0.05 LBS MAX
SHEET	35

DESIGN NO	81579
REV	1
DATE	7/1
SCALE	2/1
WT	0.05 LBS MAX
SHEET	35

REV. STATUS	DATE	APPROVED	BY	REV.
1				1
2				2
3				3

SYM.	DESCRIPTION	DATE	APPROVED	BY	REV.



- ENVIRONMENTAL SPECIFICATIONS:**
- VIBRATION: PER MIL-STD-202, METHOD 204, TEST CONDITION C AND MIL-STD-202, METHOD 210, TEST CIRCUIT B.
  - SHOCK: PER MIL-STD-202, METHOD 215, TEST CONDITION A, AND MIL-STD-202, METHOD 210, TEST CIRCUIT B.
  - MECHANICAL ENDURANCE: PER MIL-STD-202, PART 4, 10, 20,000 CYCLES AT  $-55$  DEG C, AND 20,000 CYCLES AT  $+71$  DEG C.
- ELECTRICAL SPECIFICATIONS:**
- INSULATION RESISTANCE AT 500VDC: 1000 KOHMS MIN FOR 2 MINS.
  - DIELECTRIC STRENGTH AT 1000VAC RMS: 1.05 MAMPs MAX FOR 1 MIN.

3. TERMINALS SUITABLY IDENTIFIED.
  4. OR HIGH LETTERS X OF MIN DEEP GOTHIC TYPE, FILLED WITH WHITE EPOXY WAX.
  5. ELECTRICAL RATING AT 20VDC: 5 AMP IND, 5 AMP RES.
  6. ELECTRICAL RATING AT 20VDC: 5 AMP IND, 5 AMP RES.
  7. ELECTRICAL CONTACT IS MADE OPPOSITE OF THROW.
- MATERIAL AND FINISH:**
- TERMINAL: GOLD PLATED BERYLLIUM COPPER.
  - INNER CASE AND KNOB: MOLDED DIALYL PHTHALATE PER MIL-M-14, BLACK 27036 PER FED-STD-595.
  - OUTER CASE: ALUMINUM ALLOY PER QQ-A-225/3 ANODIZED PER MIL-A-8625 TYPE II CLASS 2, BLACK 27036 PER FED-STD-595.

FIG. NO.	REV. NO.	DATE	DESCRIPTION	DATE	BY	REV.

UNLESS OTHERWISE SPECIFIED DIMENSIONS ARE IN INCHES	UNLESS OTHERWISE SPECIFIED DIMENSIONS ARE IN MILLIMETERS
XX 2:01	XX 2:01
XX 2:02	XX 2:02
XX 2:03	XX 2:03
XX 2:04	XX 2:04
XX 2:05	XX 2:05
XX 2:06	XX 2:06
XX 2:07	XX 2:07
XX 2:08	XX 2:08
XX 2:09	XX 2:09
XX 2:10	XX 2:10
XX 2:11	XX 2:11
XX 2:12	XX 2:12
XX 2:13	XX 2:13
XX 2:14	XX 2:14
XX 2:15	XX 2:15
XX 2:16	XX 2:16
XX 2:17	XX 2:17
XX 2:18	XX 2:18
XX 2:19	XX 2:19
XX 2:20	XX 2:20
XX 2:21	XX 2:21
XX 2:22	XX 2:22
XX 2:23	XX 2:23
XX 2:24	XX 2:24
XX 2:25	XX 2:25
XX 2:26	XX 2:26
XX 2:27	XX 2:27
XX 2:28	XX 2:28
XX 2:29	XX 2:29
XX 2:30	XX 2:30
XX 2:31	XX 2:31
XX 2:32	XX 2:32
XX 2:33	XX 2:33
XX 2:34	XX 2:34
XX 2:35	XX 2:35
XX 2:36	XX 2:36
XX 2:37	XX 2:37
XX 2:38	XX 2:38
XX 2:39	XX 2:39
XX 2:40	XX 2:40
XX 2:41	XX 2:41
XX 2:42	XX 2:42
XX 2:43	XX 2:43
XX 2:44	XX 2:44
XX 2:45	XX 2:45
XX 2:46	XX 2:46
XX 2:47	XX 2:47
XX 2:48	XX 2:48
XX 2:49	XX 2:49
XX 2:50	XX 2:50
XX 2:51	XX 2:51
XX 2:52	XX 2:52
XX 2:53	XX 2:53
XX 2:54	XX 2:54
XX 2:55	XX 2:55
XX 2:56	XX 2:56
XX 2:57	XX 2:57
XX 2:58	XX 2:58
XX 2:59	XX 2:59
XX 2:60	XX 2:60
XX 2:61	XX 2:61
XX 2:62	XX 2:62
XX 2:63	XX 2:63
XX 2:64	XX 2:64
XX 2:65	XX 2:65
XX 2:66	XX 2:66
XX 2:67	XX 2:67
XX 2:68	XX 2:68
XX 2:69	XX 2:69
XX 2:70	XX 2:70
XX 2:71	XX 2:71
XX 2:72	XX 2:72
XX 2:73	XX 2:73
XX 2:74	XX 2:74
XX 2:75	XX 2:75
XX 2:76	XX 2:76
XX 2:77	XX 2:77
XX 2:78	XX 2:78
XX 2:79	XX 2:79
XX 2:80	XX 2:80
XX 2:81	XX 2:81
XX 2:82	XX 2:82
XX 2:83	XX 2:83
XX 2:84	XX 2:84
XX 2:85	XX 2:85
XX 2:86	XX 2:86
XX 2:87	XX 2:87
XX 2:88	XX 2:88
XX 2:89	XX 2:89
XX 2:90	XX 2:90
XX 2:91	XX 2:91
XX 2:92	XX 2:92
XX 2:93	XX 2:93
XX 2:94	XX 2:94
XX 2:95	XX 2:95
XX 2:96	XX 2:96
XX 2:97	XX 2:97
XX 2:98	XX 2:98
XX 2:99	XX 2:99
XX 2:100	XX 2:100

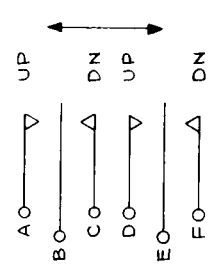
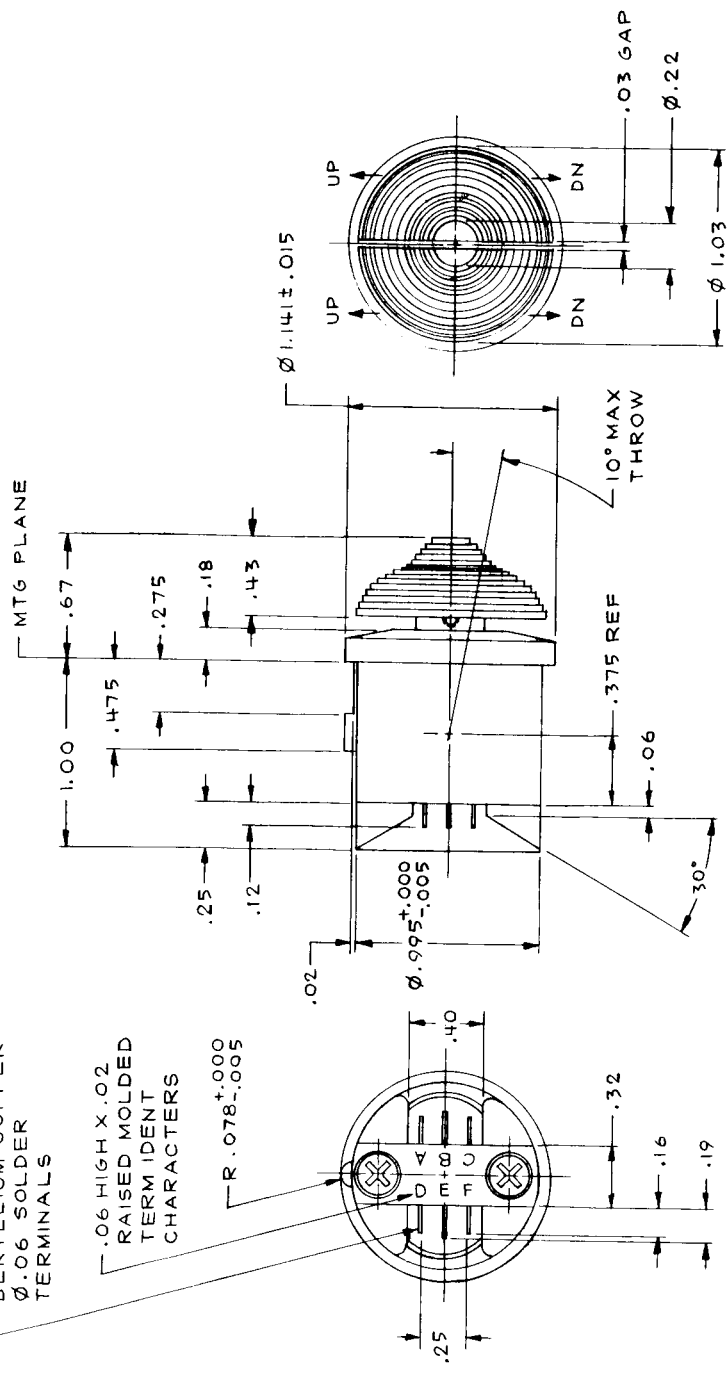
SCALE 2/1 1/4" = 1" (SEE DRAWING FOR DIMENSIONS)

REV STATUS OF SHEETS	
SH	REV
1	
2	
3	

REVISIONS		DATE	APPROVED
SYM	DESCRIPTION		

GOLD PLATED BERYLLIUM COPPER  
Ø.06 SOLDER  
TERMINALS

.06 HIGH X .02  
RAISED MOLDED  
TERM IDENT  
CHARACTERS



CIRCUIT DIAGRAM

5. MOLDED PLASTIC PORTIONS OF SWITCH CONFORM TO MIL-M-14, PHENOLIC & DIALLYL PHTHALATE, BLACK 17038 PER FED-STD-595.

4. ACTUATION FORCE: 21 TO 36 OZ.

3. LIFE: 150,000 CYCLES, ELECTRIC & MECHANICAL.

2. ELECTRICAL RATING: 2 AMPS IND AT 28 VDC.

1. SWITCH MEETS REQTS OF MIL-S-9419 EXCEPT AS SHOWN OR SPECIFIED.

NOTES, SPECIFIC:

2. DIMENSIONS APPLY AFTER PLATING.

1. REMOVE ALL BURRS AND SHARP EDGES; SPRUE AND ALL FLASH; GATES, FINS AND RISERS. NOTES, GENERAL, UNLESS OTHERWISE SPECIFIED AND AS APPLICABLE:

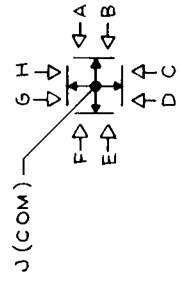
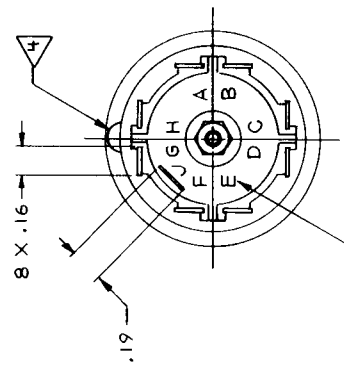
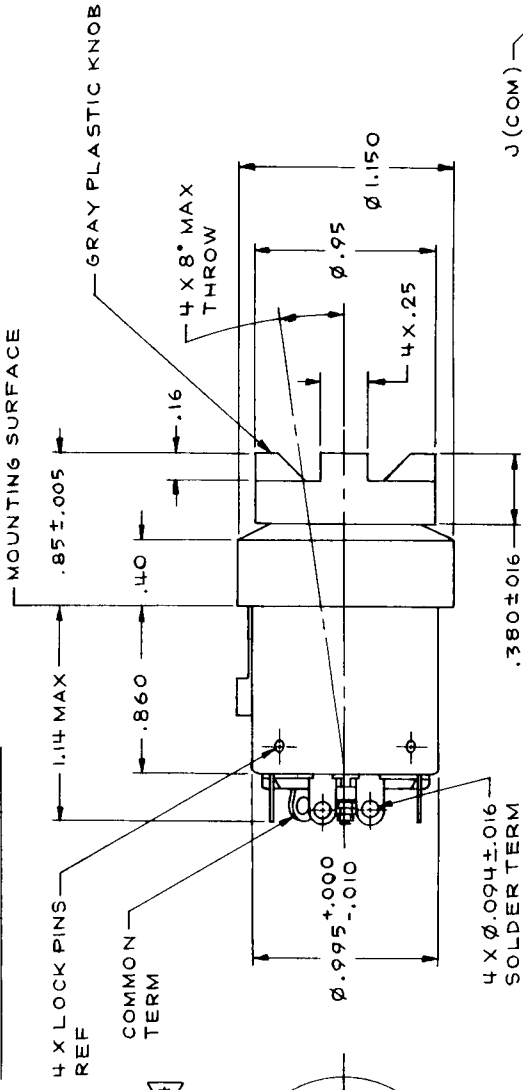
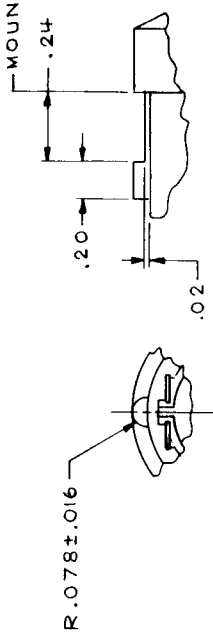
FIND NO	QTY RECD	CODE IDENT NO	PART OR IDENTIFYING NUMBER	NOMENCLATURE OR DESCRIPTION	NOTE
				MATERIALS OR PARTS LIST	
UNLESS OTHERWISE SPECIFIED DIMENSIONS ARE IN INCHES				MASON ELECTRIC COMPANY, INC	
TOLERANCES				SIZE CODE IDENT NO	
DECIMALS .001				C 81579	
ANGLES ±1°				SCALE / WT 2.0 OZ MAX SHEET	
XXX ±.005				SWITCH, TOGGLE, DPDT, MC, CTR OFF, DUAL CONTROL	
HEAT TREAT				PREPARED	
FINISH				CHECKED	
SYMBOLS				APPROVED	
NOTES				PARTS LIST	
				FIND NO	

REV STATUS OF SHEETS	
SH	REV
1	
2	
3	

REVISIONS		
SYM	DESCRIPTION	DATE

SYMBOL	DESCRIPTION	DATE	APPROVED

**DETAIL A LOCATION BOSS**



**CIRCUIT DIAGRAM  
VIEWED FROM TERMINAL  
END**

- ACTUATION FORCE: 2.5-4.0 LB.
- LOCATING BOSS POSITIONED HERE, SEE DETAIL A FOR DIMENSIONS.
- TERMINAL LUGS ARE SILVER OR FLASH GOLD PLATED.
- CURRENT RATING: 5-50 MA RES AT 30 VDC MAX.
- UNLESS OTHERWISE SPECIFIED OR SHOWN SWITCH MEETS REQUIREMENTS OF MIL-S-9419B SPECIFICATION.

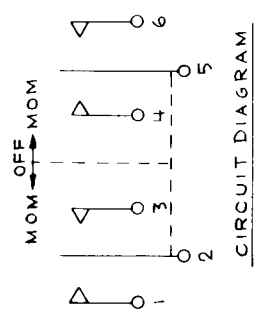
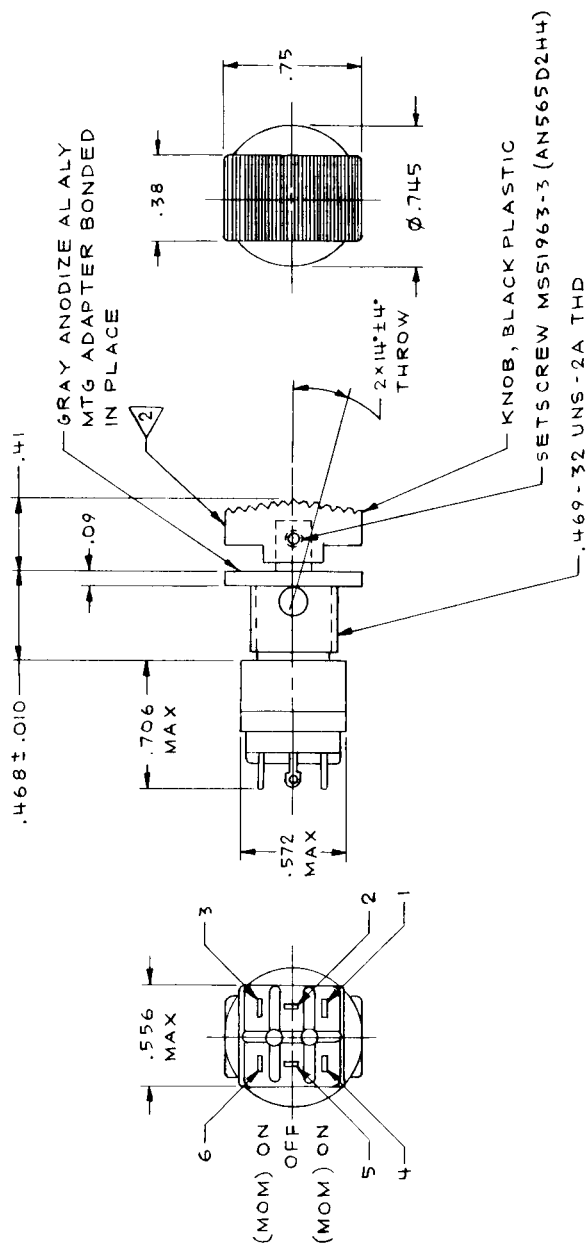
**NOTES, SPECIFIC:**

- DIMENSIONS APPLY AFTER PLATING.
  - REMOVE ALL BURRS AND SHARP EDGES; SPRUE AND ALL FLASH; GATES, FINS AND RISERS.
- NOTES, GENERAL, UNLESS OTHERWISE SPECIFIED AND AS APPLICABLE:

FIND NO	QTY	CODE	IDENT NO	PART OR IDENTIFYING NUMBER	NOMENCLATURE OR DESCRIPTION	NOTE
MATERIALS OR PARTS LIST						
UNLESS OTHERWISE SPECIFIED DIMENSIONS ARE IN INCHES						
DECIMALS ANGLES SURF FINISH						
XX	±.03					
XXX	±.010					
HEAT TREAT FINISH						
SYMBOLS PARTS LIST						
NOTES FIND NO						
PREPARED						
CHECKED						
APPROVED						
MASON ELECTRIC COMPANY, INC						
SWITCH, TOGGLE, SEALED, SP4T, MC, SPLIT CONTACT, CTR OFF, LOW CURRENT						
SIZE CODE IDENT NO						
C 81579						
SCALE / WT O.I.O LB SHEET						

REV STATUS OF SHEETS	
SH	REV
1	
2	
3	

REVISIONS		DATE	APPROVED
SYM	DESCRIPTION		



3. ELECTRICAL RATING: 2 AMPS AT 28 VDC.

2. ACTUATION FORCE: 5 ± 1 LBS APPLIED AS SHOWN.

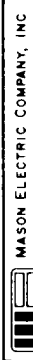
1. SWITCH MEETS REQUIREMENTS OF MIL-S-8834 & MS90311-271 EXCEPT AS SHOWN.

NOTES, SPECIFIC:

2. DIMENSIONS APPLY AFTER PLATING.

1. REMOVE ALL BURRS AND SHARP EDGES; SPRUE AND ALL FLASH; GATES, FINS AND RISERS. NOTES, GENERAL, UNLESS OTHERWISE SPECIFIED AND AS APPLICABLE:

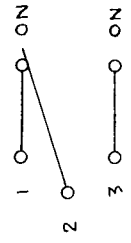
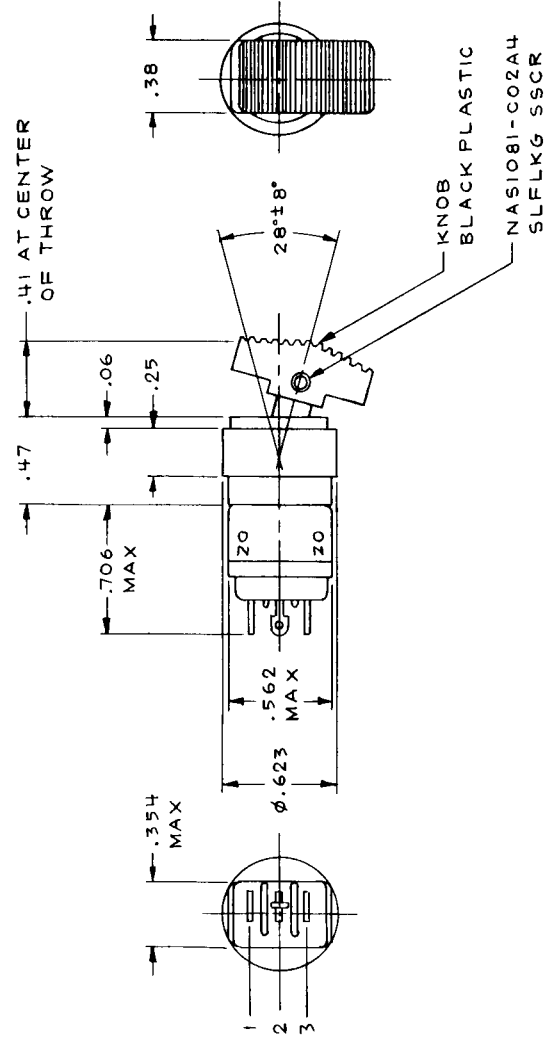
FIND NO	QTY	CODE	IDENT NO	PART OR IDENTIFYING NUMBER	NOMENCLATURE OR DESCRIPTION	NOTE
					MATERIALS OR PARTS LIST	
UNLESS OTHERWISE SPECIFIED DIMENSIONS ARE IN INCHES						
TOLERANCES						
DECIMALS		ANGLES		SURF FNISH		
XX ± .01		± 1°		NA		
XXX ± .005						
HEAT TREAT		FINISH				
SYMBOLS		PARTS LIST		PREPARED		
△ NOTES		□ FIND NO		CHECKED		
				APPROVED		
				SIZE CODE IDENT NO		
				C 81579		
				SCALE		
				/ WT. 20 GRAMS MAX. SHEET		



SWITCH, TOGGLE, DPDT,  
CTR OFF, MC-MC,  
SPEED BRAKE

MASON ELECTRIC COMPANY, INC

REVISIONS		REV STATUS OF SHEETS	
SYM	DESCRIPTION	DATE	APPROVED



FIND NO	QTY REQD	CODE IDENT NO	PART OR IDENTIFYING NUMBER	NOMENCLATURE OR DESCRIPTION	NOTE
				MATERIALS OR PARTS LIST	
UNLESS OTHERWISE SPECIFIED DIMENSIONS ARE IN INCHES			MASON ELECTRIC COMPANY, INC		
DECIMALS TOLERANCES SURF FINISH			SWITCH, TOGGLE, SPDT, NC, MAINTAINING		
.XX ± .01 31° N/A			SIZE CODE IDENT NO		
.XXX ± .009 31° N/A			C 81579		
HEAT TREAT FINISH			SCALE / WT. .05 LBS MAX SHEET		
SYMBOLS			PREPARED		
NOTES			CHECKED		
PARTS LIST			APPROVED		
FIND NO					

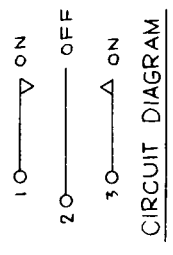
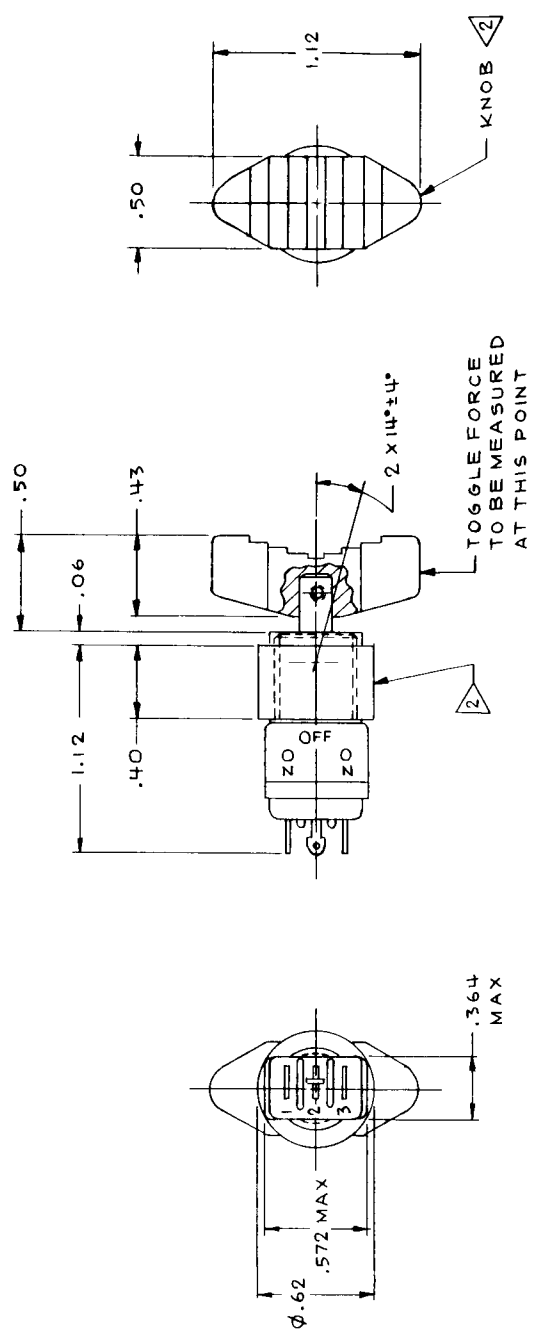
1. BASIC SWITCH CONFORMS TO MIL-S-8834 & MS90310-231.

NOTES, SPECIFIC:

2. DIMENSIONS APPLY AFTER PLATING.
1. REMOVE ALL BURRS AND SHARP EDGES; SPRUE AND ALL FLASH; GATES, FINS AND RISERS.
- NOTES, GENERAL, UNLESS OTHERWISE SPECIFIED AND AS APPLICABLE:

REV STATUS OF SHEETS	
SH	REV
1	
2	
3	

REVISIONS		DATE	APPROVED
SYM	DESCRIPTION		



3. ELECTRICAL RATING: 5 A RES, 1 A IND AT 28 VDC. ACTUATION FORCE: 3.0 ± 1.0 LBS.

2. MATERIAL AND FINISH: SWITCH ADAPTER; 6061-T6 ALUMINUM ALLOY PER QQ-A-225/B. BLACK SULFURIC ANODIZE PER MIL-A-8625, TYPE II, CLASS 2. KNOB; MOLDED DIALLYL ORTHOPHTHALATE PLASTIC PER MIL-M-14/6, GDI-30F. BLACK 27038 COLOR PER FED-STD-595.

1. BASIC SWITCH CONFORMS TO MIL-S-8834 AND MS90310-271.

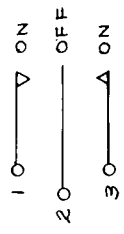
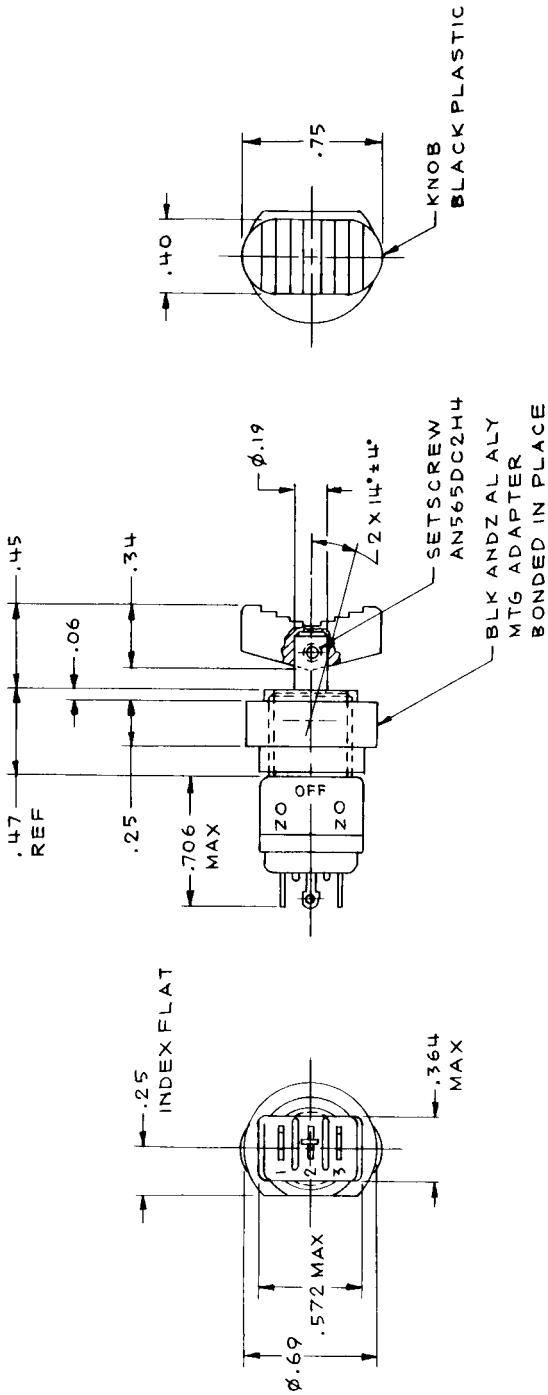
NOTES, SPECIFIC:

2. DIMENSIONS APPLY AFTER PLATING

1. REMOVE ALL BURRS AND SHARP EDGES; SPRUE AND ALL FLASH; GATES, FINS AND RISERS. NOTES, GENERAL, UNLESS OTHERWISE SPECIFIED AND AS APPLICABLE:

FIND NO	QTY	CODE	PART OR IDENTIFYING NUMBER	NOMENCLATURE OR DESCRIPTION	NOTE
MATERIALS OR PARTS LIST				MASON ELECTRIC COMPANY, INC	
UNLESS OTHERWISE SPECIFIED DIMENSIONS ARE IN INCHES				SWITCH, TOGGLE, SPDT, CTR OFF, MC	
DECIMALS TOLERANCES				SIZE CODE IDENT NO	
XX ±.03				C 81579	
.XXX±.010				SCALE / WT	
HEAT TREAT FINISH				PREPARED	
				CHECKED	
SYMBOLS				APPROVED	
NOTES				PARTS LIST	
				FIND NO	

REV STATUS		REV OF SHEETS	
SYM	DESCRIPTION	DATE	APPROVED
SH	REV		
1			
2			
3			



CIRCUIT DIAGRAM

FIND NO	QTY REQD	CODE IDENT NO	PART OR IDENTIFYING NUMBER	NOMENCLATURE OR DESCRIPTION	NOTE
MATERIALS OR PARTS LIST					
UNLESS OTHERWISE SPECIFIED DIMENSIONS ARE IN INCHES					
TOLERANCES					
DECIMALS	ANGLES	SURF FINISH			
XX ±.03	±1°	NA			
.XXX±.010					
HEAT TREAT	FINISH				
		PREPARED	CHECKED	APPROVED	
NOTES	SYMBOLS	PARTS LIST		SIZE	CODE IDENT NO
△	□	FIND NO		C 81579	
				SCALE	WT
					SHEET



MASON ELECTRIC COMPANY, INC

SWITCH, TOGGLE, SPDT,  
CTR OFF, MG,  
IMPULSE TRACKING

1. BASIC SWITCH CONFORMS TO MS90310 AND MIL-S-8834.

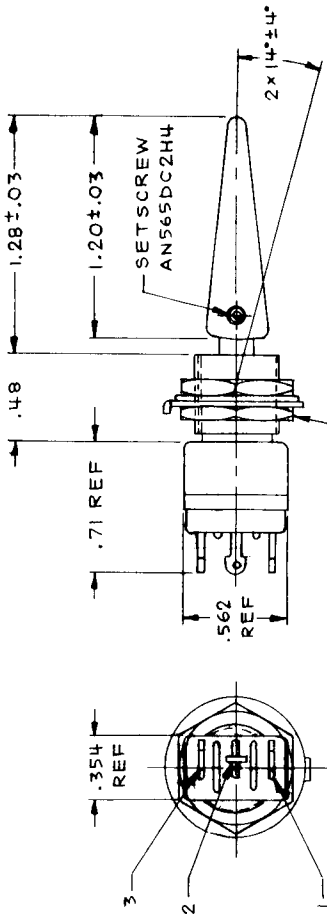
NOTES, SPECIFIC:

2. DIMENSIONS APPLY AFTER PLATING.

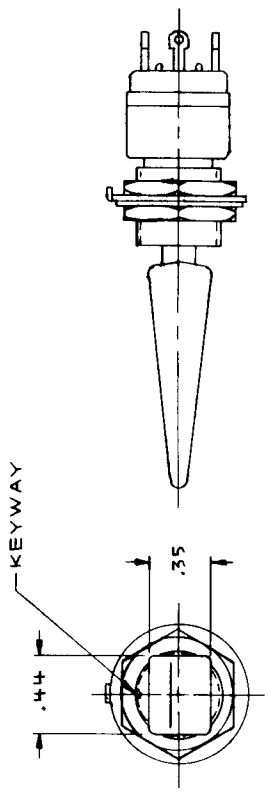
1. REMOVE ALL BURRS AND SHARP EDGES; SPRUE AND ALL FLASH; GATES, FINS AND RISERS. NOTES, GENERAL, UNLESS OTHERWISE SPECIFIED AND AS APPLICABLE:

REV STATUS OF SHEETS	
SH	REV
1	
2	
3	

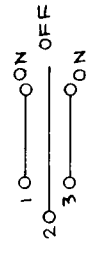
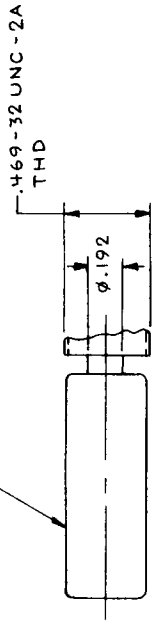
REVISIONS		DATE	APPROVED
SYM	DESCRIPTION		



MTG HDW INCLUDES  
 MS25081-4 KEY WASH  
 2 MS25082-8 HEX NUT  
 MS35333-121 INT TOOTH  
 LK WASH



KNOB  
 BLACK PLASTIC



CIRCUIT DIAGRAM

FIND NO	QTY RECD	CODE IDENT NO	PART OR IDENTIFYING NUMBER	NOMENCLATURE OR DESCRIPTION	NOTE
MATERIALS OR PARTS LIST					
UNLESS OTHERWISE SPECIFIED DIMENSIONS ARE IN INCHES			MASON ELECTRIC COMPANY, INC		
TOLERANCES			SWITCH, TOGGLE, SPDT, CTR OFF, MAINTAINING		
DECIMALS	ANGLES	SURF FINSH	SIZE CODE IDENT NO		
XX ± .01	± 1°	NA	C 81579		
XXX ± .005			SCALE	WT	SHEET
HEAT TREAT	FINISH	SYMBOLS	PREPARED	CHECKED	APPROVED
		NOTES			
		PARTS LIST			
		FIND NO			

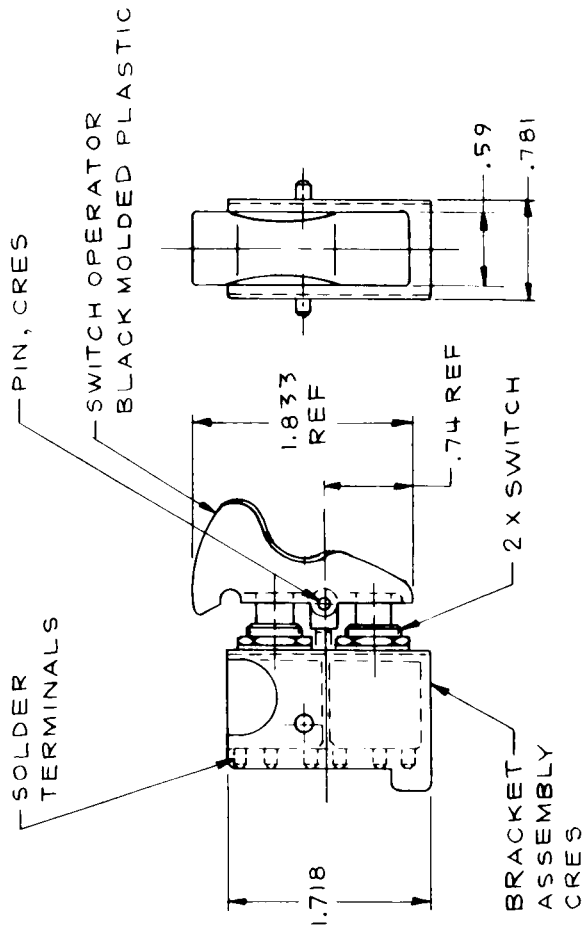
1. BASIC SWITCH CONFORMS TO MIL-S-8834 & MS90310-211.

NOTES, SPECIFIC:

2. DIMENSIONS APPLY AFTER PLATING.

1. REMOVE ALL BURRS AND SHARP EDGES; SPRUE AND ALL FLASH; GATES, FINS AND RISERS. NOTES, GENERAL, UNLESS OTHERWISE SPECIFIED AND AS APPLICABLE:

REVISIONS		REV STATUS OF SHEETS	
SYM	DESCRIPTION	DATE	APPROVED



SCHMATIC DIAGRAM

FIND NO	QTY RECD	CODE IDENT	PART OR IDENTIFYING NUMBER	NOMENCLATURE OR DESCRIPTION	NOTE
				MATERIALS OR PARTS LIST	
UNLESS OTHERWISE SPECIFIED DIMENSIONS ARE IN INCHES DECIMALS TOLERANCES ±.01 SURF FINISH NA ANGLES ±1° FINISH NA HEAT TREAT FINISH SYMBOLS PARTS LIST FIND NO NOTES <input type="checkbox"/>					
PREP CHKD APVD MASON ELECTRIC COMPANY, INC SWITCH ASSEMBLY, TRIGGER SIZE CODE IDENT NO B 81579 SCALE / WT SH					

1. ELECTRICAL RATING: 3 AMP IND, 5 AMP RES AT 30 VDC.

NOTES, SPECIFIC

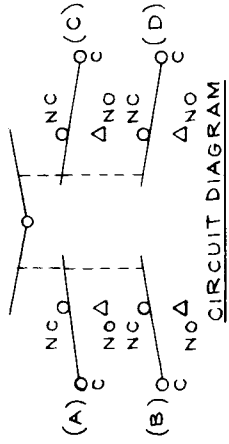
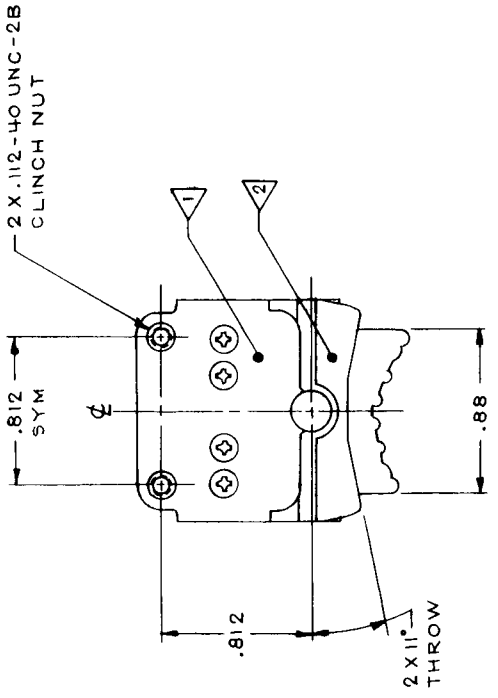
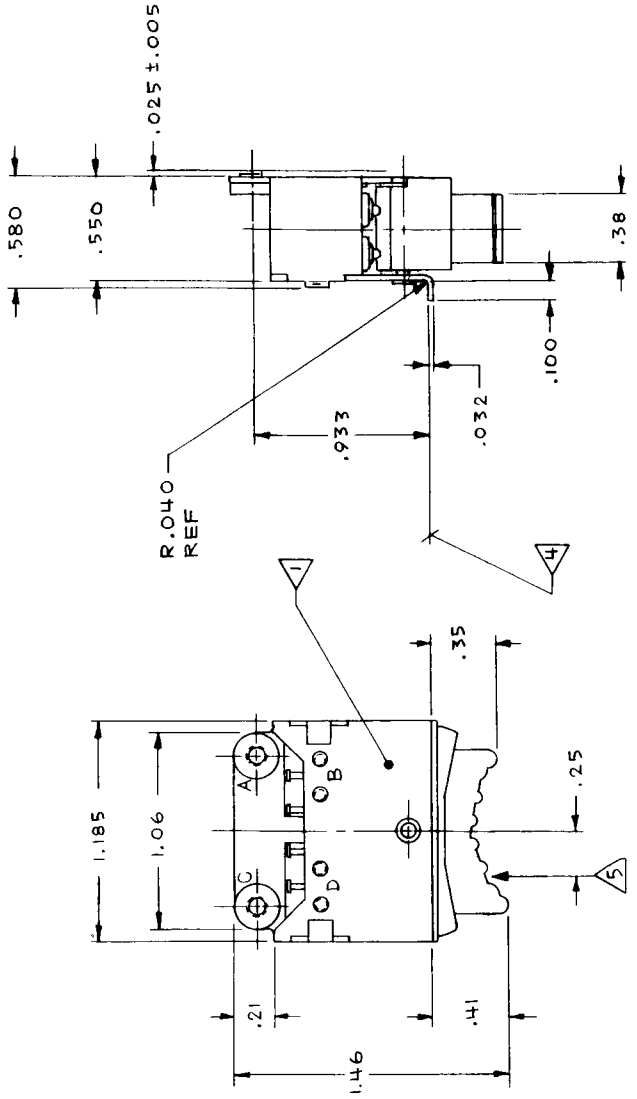
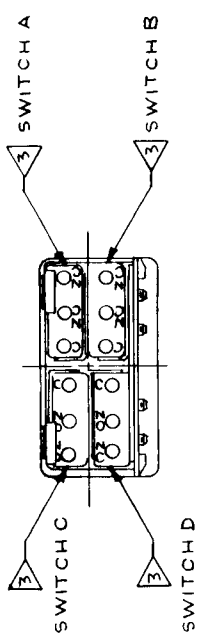
2. DIMENSIONS APPLY AFTER PLATING.

- 1 REMOVE ALL BURRS & SHARP EDGES, SPRUE & ALL FLASH; GATES, FINS, & RISERS.

NOTES, GENERAL, UNLESS OTHERWISE SPECIFIED & AS APPLICABLE:

REV STATUS OF SHEETS	
SH	REV
1	1
2	2
3	3


REVISIONS		DATE	APPROVED
SYM	DESCRIPTION		



- 5 ACTUATION FORCE APPLIED AS SHOWN: 19 ± 5 OZ.
  - 4 FINISH ON SURFACE INDICATED: GOLD CHEMICAL FILM PER MIL-C-5541, CLASS 1A.
  - 3 SWITCHES ARE MS24547-2 PER MIL-S-8805/4, ELECTRICAL RATING: 2 AMPS RES AT 28 VDC, LOW CURRENT REQUIREMENT.
  - 2 MATERIAL: MOLDED ORTHO DIALLYL PHTHALATE PLASTIC PER MIL-M-14, GRAY 36231 PER FED-STD-595.
  - 1 MATERIAL AND FINISH: ALUMINUM ALLOY 6061-T4 PER QQ-A-250/11, BLACK SULFURIC ANODIZE AND DICHROMATE SEALED PER MIL-A-8625, TYPE II, CLASS 2, ALL SURFACES EXCEPT NOTE 4.
- NOTES, SPECIFIC:
- 2. DIMENSIONS APPLY AFTER PLATING.
  - 1. REMOVE ALL BURRS AND SHARP EDGES; SPRUE AND ALL FLASH; GATES, FINS AND RISERS.
- NOTES, GENERAL, UNLESS OTHERWISE SPECIFIED AND AS APPLICABLE:

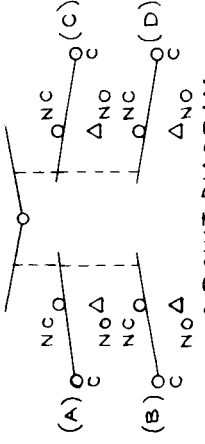
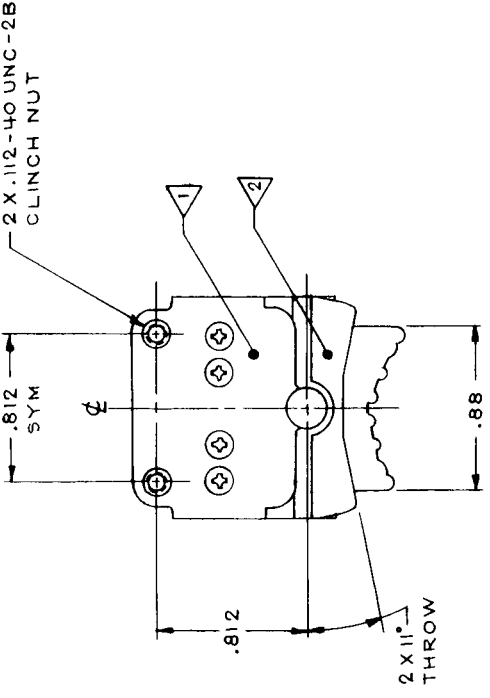
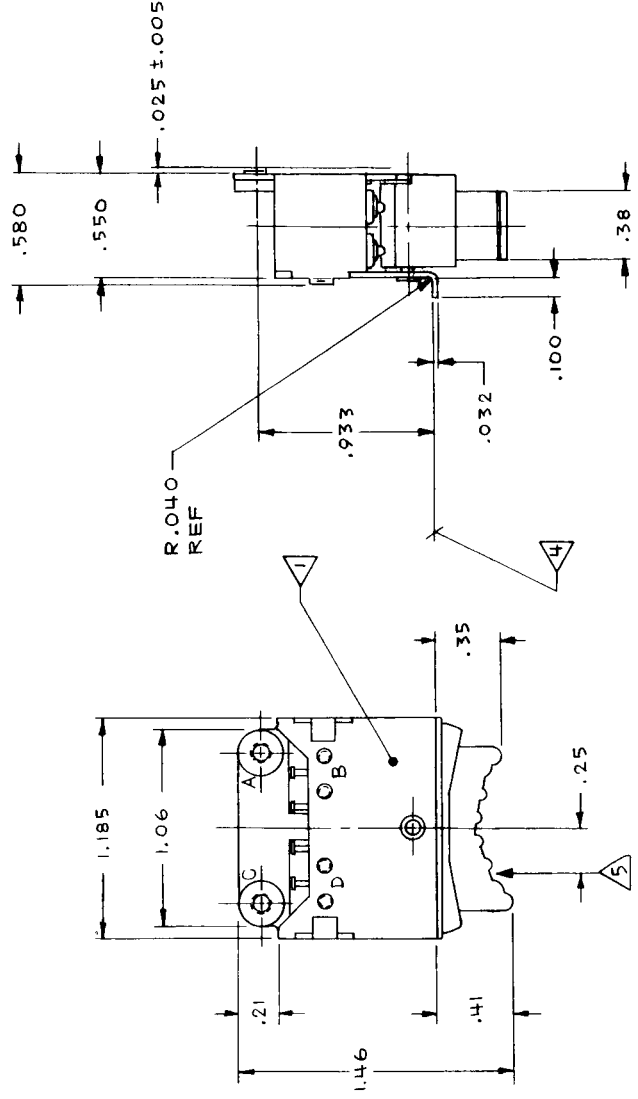
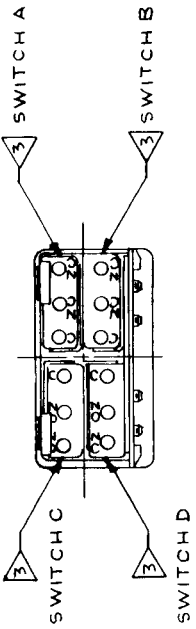
FIND NO	QTY	CODE	PART OR IDENTIFYING NUMBER	NOMENCLATURE OR DESCRIPTION	NOTE

MATERIALS OR PARTS LIST	
UNLESS OTHERWISE SPECIFIED DIMENSIONS ARE IN INCHES	
DECIMALS	
ANGLES	
SURF FNISH	
XX ± .03	
XXX ± .010	
HEAT TREAT	
FINISH	
SYMBOLS	
NOTES	
PARTS LIST	
FIND NO	
PREPARED	
CHECKED	
APPROVED	
SIZE CODE IDENT NO	
 MASON ELECTRIC COMPANY, INC SWITCH, ROCKER, 4 CKT, MAINT-MOM, LC	
SCALE	WT 0.65 OZ MAX
<b>C 81579</b>	

REV STATUS OF SHEETS	
SH	REV
1	
2	
3	

REVISIONS		DATE	APPROVED
SYM	DESCRIPTION		



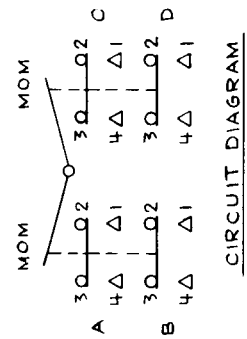
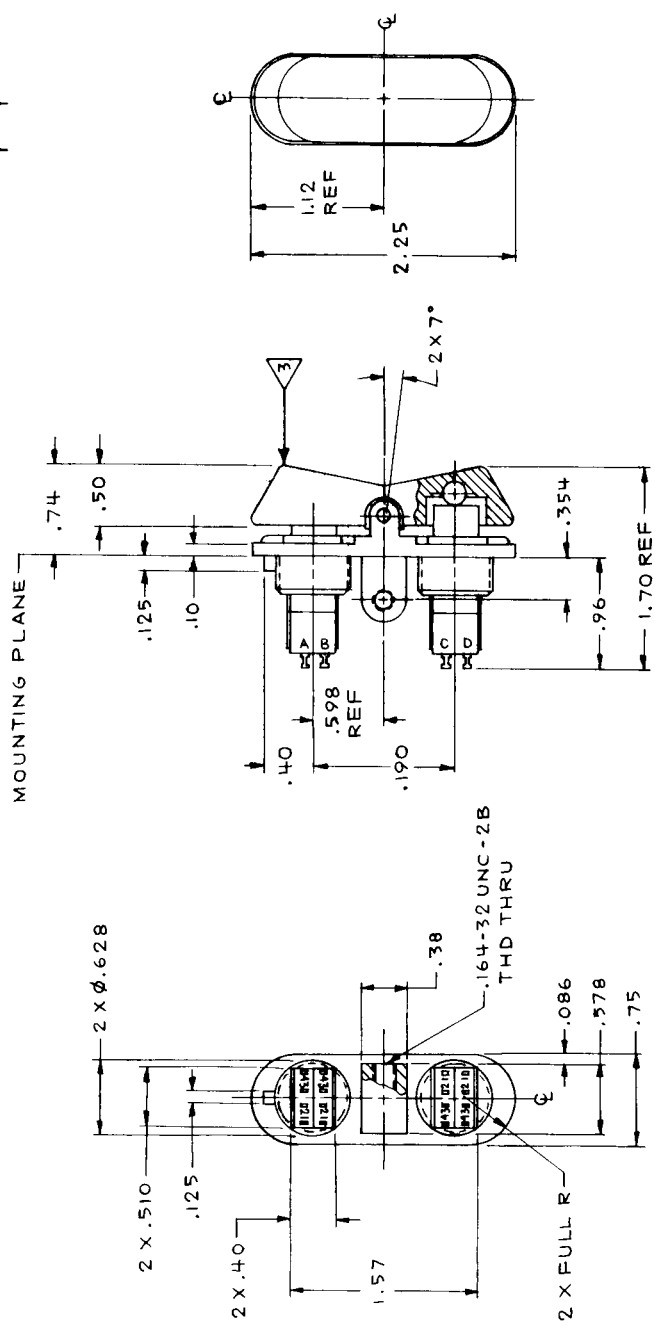
FIND NO	QTY	CODE	PART OR IDENTIFYING NUMBER	NOMENCLATURE OR DESCRIPTION	NOTE

MATERIALS OR PARTS LIST		MATERIALS OR PARTS LIST	
UNLESS OTHERWISE SPECIFIED DIMENSIONS ARE IN INCHES		MASON ELECTRIC COMPANY, INC	
DECIMALS	±.03	SIZE CODE IDENT NO	C 81579
ANGLES	±1°	SCALE	/ WT 0.65 OZ MAX SHEET
SURF FINISH	NA	PREPARED	
HEAT TREAT		CHECKED	
		APPROVED	
SYMBOLS	NOTES	SWITCH, ROCKER, 4 CKT, MAINT-MOM, LC	
□ PARTS LIST	△ NOTES		

- 5 ACTUATION FORCE APPLIED AS SHOWN: 19 ± 5 OZ.
- 4 FINISH ON SURFACE INDICATED: GOLD CHEMICAL FILM PER MIL-C-5541, CLASS 1A.
- 3 SWITCHES ARE MS24547-2 PER MIL-S-8805/4, ELECTRICAL RATING: 2 AMPS RES AT 28 VDC, LOW CURRENT REQUIREMENT.
- 2 MATERIAL: MOLDED ORTHO DIALYL PHTHALATE PLASTIC PER MIL-M-14, GRAY 36231 PER FED-STD-595.
- 1 MATERIAL AND FINISH: ALUMINUM ALLOY 6061-T4 PER QQ-A-250/11, BLACK SULFURIC ANODIZE AND DICHROMATE SEALED PER MIL-B-8625, TYPE II, CLASS 2, ALL SURFACES EXCEPT NOTE 4.
- NOTES, SPECIFIC:
2. DIMENSIONS APPLY AFTER PLATING.
1. REMOVE ALL BURRS AND SHARP EDGES; SPRUE AND ALL FLASH; GATES, FINS AND RISERS. NOTES, GENERAL, UNLESS OTHERWISE SPECIFIED AND AS APPLICABLE.

REV STATUS OF SHEETS	
SH	REV
1	
2	
3	

REVISIONS	
DESCRIPTION	DATE

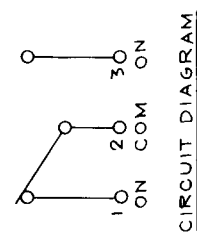
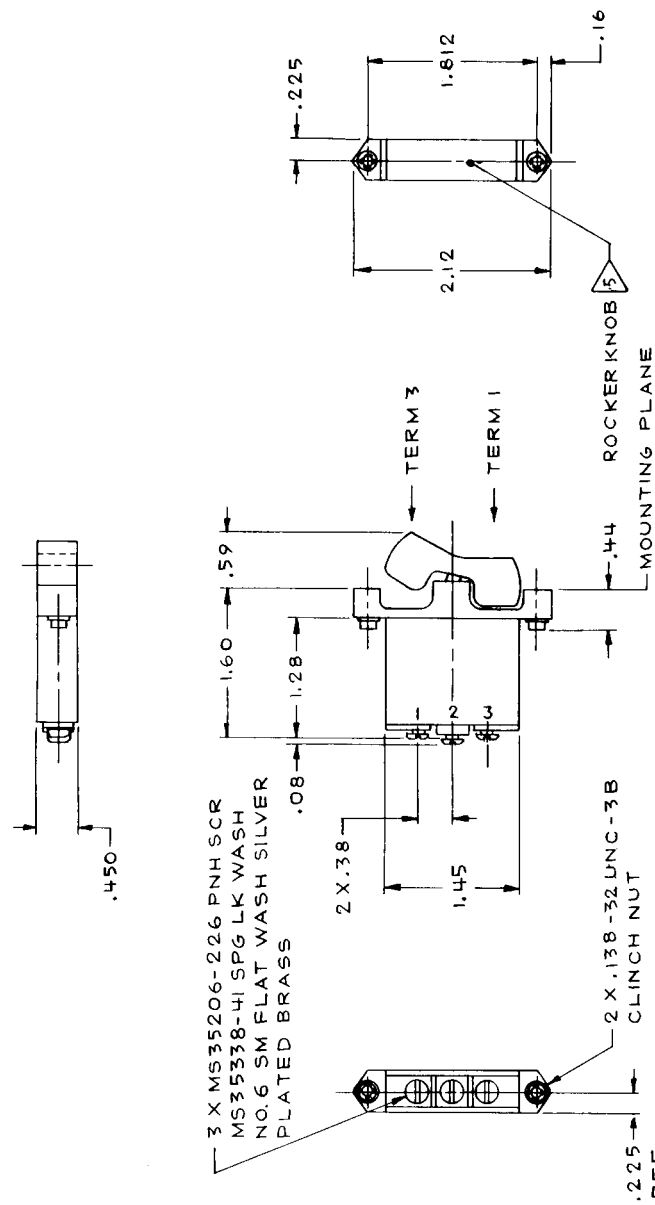


4. MATERIAL AND FINISH: KNOB AND MOUNTING BRACKET ARE 6061-T6 ALUMINUM ALLOY PER QQ-A-225, ANODIZED BLACK PER MIL-A-8625, TYPE II, CLASS 2.
  3. OPERATING FORCE: 4.0 LBS MAX AT POINT SHOWN.
  2. ELECTRICAL ENDURANCE: 50,000 CYCLES.
  1. ELECTRICAL RATING: 3 AMPS INDUCTIVE, 3 AMPS RES AT 28 VDC.
- NOTES, SPECIFIC:
2. DIMENSIONS APPLY AFTER PLATING.
  1. REMOVE ALL BURRS AND SHARP EDGES; SPRUE AND ALL FLASH; GATES, FINS AND RISERS.
- NOTES, GENERAL, UNLESS OTHERWISE SPECIFIED AND AS APPLICABLE:

FIND NO	QTY	CODE	IDENT NO	PART OR IDENTIFYING NUMBER	NOMENCLATURE OR DESCRIPTION	NOTE
MATERIALS OR PARTS LIST						
UNLESS OTHERWISE SPECIFIED DIMENSIONS ARE IN INCHES						
DECIMALS		TOLERANCES		ANGLES		SURF FINISH
XX ±.03		±.1°		±1°		NA
.XXX±0.10						
HEAT TREAT		FINISH		SYMBOLS		PARTS LIST
				<input type="checkbox"/> NOTES <input type="checkbox"/> FIND NO		<input type="checkbox"/> PREPARED <input type="checkbox"/> CHECKED <input type="checkbox"/> APPROVED
MASON ELECTRIC COMPANY, INC		SIZE		CODE IDENT NO		SCALE / WT
SWITCH, ROCKER, DPDT, 2 CKT, CTR OFF, MC, NO, NC		C 81579				SHEET

REV STATUS OF SHEETS	
SH	REV
1	
2	
3	

REVISIONS		DATE	APPROVED
SYM	DESCRIPTION		



- MATERIALS: TERMINALS ARE GOLD PLATED BERYLLIUM COPPER OR BRASS. ROCKER KNOB IS MOLDED WHITE TRANSLUCENT PLASTIC. HOUSING IS MOLDED BLACK DIALLYL PHTHALATE REINFORCED PLASTIC. MOUNTING FRAME IS BLACK ANODIZED DIE CAST ALUMINUM.
  - SWITCH DESIGNED TO MEET APPLICABLE REQUIREMENTS OF MIL-S-3950.
  - FUNCTION: SINGLE POLE, TWO POSITION, MAINTAINING CONTACT.
  - MECHANICAL & ELECTRICAL LIFE: 100,000 CYCLES MECHANICAL; 20,000 CYCLES RATED ELECTRICAL LOAD.
  - ELECTRICAL RATING: 5 AMP IND & 10 AMP RES AT 28 VDC.
- NOTES, SPECIFIC:
- DIMENSIONS APPLY AFTER PLATING.
  - REMOVE ALL BURRS AND SHARP EDGES; SPRUE AND ALL FLASH; GATES, FINS AND RISERS.
- NOTES, GENERAL, UNLESS OTHERWISE SPECIFIED AND AS APPLICABLE:

FIND NO	QTY	RECD	CODE IDENT NO	PART OR IDENTIFYING NUMBER	NOMENCLATURE OR DESCRIPTION	NOTE
MATERIALS OR PARTS LIST						
UNLESS OTHERWISE SPECIFIED DIMENSIONS ARE IN INCHES						
DECIMALS		TOLERANCES		ANGLES		SURF FINISH
.XX ±.01		±.1°		NA		NA
.XXX ±.005						
HEAT TREAT		FINISH		PREPARED		CHECKED
APPROVED		APPROVED		APPROVED		APPROVED
SYMBOLS		LIST		FIND NO		FIND NO
△ NOTES		□ FIND NO				
SIZE CODE IDENT NO		C 81579		SCALE /		1.6 OZ MAX SHEET
MASON ELECTRIC COMPANY, INC		SWITCH, ROCKER, SP2T		MAINTAINING CONTACT		